






Introduction of Nikon Trimble



Nikon Trimble - Joint Venture company

		
Established	1917	1978
Products	High Quality Optical and Imaging	GNSS, Robotic TS, LiDAR and Integration
Headquarters	Tokyo, Japan	Sunnyvale, CA USA
Revenue	6.6 Billion USD	2.4 Billion USD
Employees	25,000	8,000
		
Established	2003 (Nikon 50% Trimble 50%)	
Products	Design and Manufacturing Optical Products and Distribute World Wide	
Sales	Trimble Products and Nikon Optical Products	

Business and Product Relations



Optical Products

- R&D
- Manufacturing
- Export
- Sales in Japan



Software Products

- R&D
- Sales and Customer Support

Distribute Trimble Product

- Authorized Dealer in Japan
- Direct Sales (Key Accounts)



Distribute by Dealer or Direct

Manufacturing for Trimble


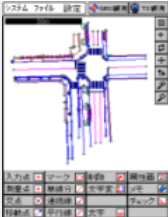



- Manual Total Station
- Assembly, Logistics and Repair



Global Distribute by Trimble

Optical Products

		Model	Feature	
Autolevel			AS/AE	Long seller
			AX/AC/AP	Affordable
Theodolite			NE	High quality
Manual Total Station			Nivo M/Nivo C	Compact, Advanced
			NPL	Affordable Non Prism
			DTM	Easy to use Prism
			FOCUS 6/FOCUS8	Compact, Advanced
			M3	Trimble Access
			M1	Affordable Non prism

Model		Application
Field Software for Totalstation	LANDRiV 	Construction workflows <ul style="list-style-type: none"> Road, Stakeout As-built inspection
	efit 	Surveying workflows <ul style="list-style-type: none"> Face-1/Face-2 measurements Stakeout, Topo
Field Software for GNSS	SKY Controller (Android) 	Surveying workflows <ul style="list-style-type: none"> Static VRS-RTK
Field CAD system	GUIDER 	Topographic surveying with TS and GNSS
Surveying CAD system	TOWISE 	2D drafting and surveying calculation TBC integration for GNSS processing

Distribute Trimble Product

Industry Segments		Solutions
Government and Key Accounts 	Mobile Mapping, UAS, Applanix, LiDAR MGIS, Infra GNSS TIT, Timing, OEM	
Survey 	TS, GNSS 3D, UAS, TIT, OEM	
iCT Earthworks 	MC/MG, LOADLITE OEM	
Building and Construction 	Nikon and Spectra MEP (RPT600,RTS) Nikon Imaging Solution	
Agriculture 	Guidance Water Management	

Manufacturing for Trimble



Photo by Trimble UX5



History	Established in 1981
Assembly	Totalstation
QC/QA	<ul style="list-style-type: none">• ISO9001 since 1996• Nikon Standard• Incoming Inspection for Trimble products
Logistics, Repair	<ul style="list-style-type: none">• Nikon Trimble product• Trimble product

IAG-IASPEI

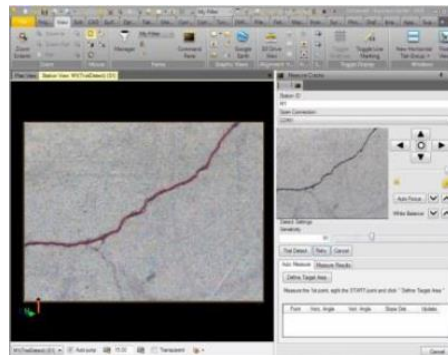
July 30 - August 4, 2017

Kobe, Japan

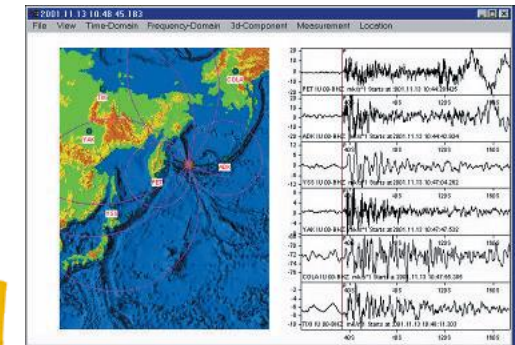
Joint Scientific Assembly of the International Association of Geodesy and
 the International Association of Seismology and Physics of the Earth's Interior

Kobe International Conference Center

Co-hosted by Science Council of Japan, Geodetic Society of Japan, Seismological Society of Japan



Nivo-i



SG160-09

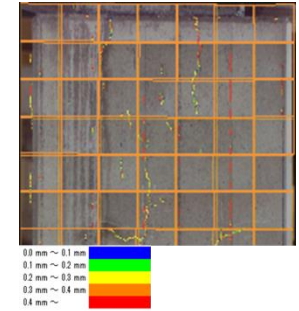
KESTREL SEISMOGEODETTIC SYSTEM

Page 8

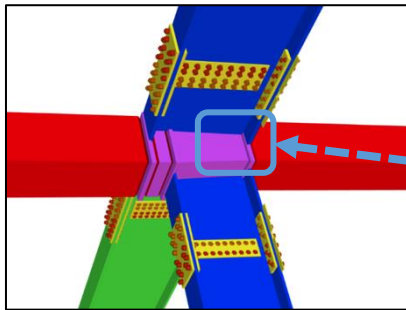
Nivo-i Imaging Total Station

- Visualization of 3D design data on site
 - Import DXF file (Tekla)
- Application
 - Measurement of large structure with real time video image
 - Alignment for steel assembly by real time video image with AR display

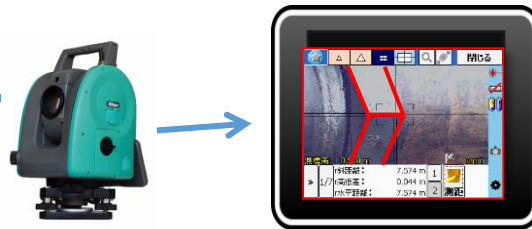
- Automatic Crack Detection and Measurement
- Application
 - Bridge Monitoring
 - Dam Monitoring



Tekla model



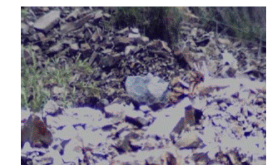
Nikon Imaging Solution + Tablet PC



Displacement monitoring of devastated mountain slope



1st Day



Kestrel SeismoGeodetic System

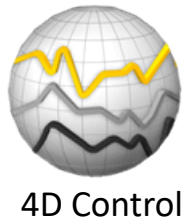
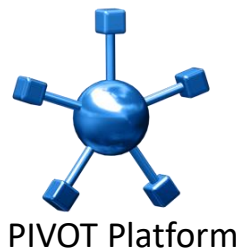
- The Trimble Kestrel System provides the user with high rate GNSS and accelerometer data, full epoch-to-epoch measurement integrity and, using the Trimble SeismoGeodetic App, the ability to create a combined GNSS and accelerometer stream (200 sps high resolution displacement time series) in real-time.



Real-time GNSS
 In combination with RTK
 & RTK corrections

**High Rate, Real-time
 Accelerometer**

**Trimble SG160-09
 SeismoGeodetic System**



Correction Service
 CenterPoint RTX
 VRS Now

