

# Smart Land, Valuable Information, Public Corporation,

LX leads the nation's territorial information systems  
while creating innovative opportunities  
for future generations



An aerial photograph of a coastal city, likely Victoria, British Columbia, Canada. The city is built on a peninsula and extends into the water. The surrounding area includes green hills, fields, and a large body of water with many islands. A blue rectangular box is overlaid on the left side of the image, containing the word "CONTENTS" in white capital letters.

# CONTENTS

01 History & Mission

02 Organization & Personnel

03 Goals

04 Awards and Recognitions

05 LX Vision 2030

06 Main Activities

07 Opportunities

The history of the space that LX makes, the future of humanity

## History & Mission



Establishing Geospatial Information System



Research on Geospatial Information and Cadaster Policies



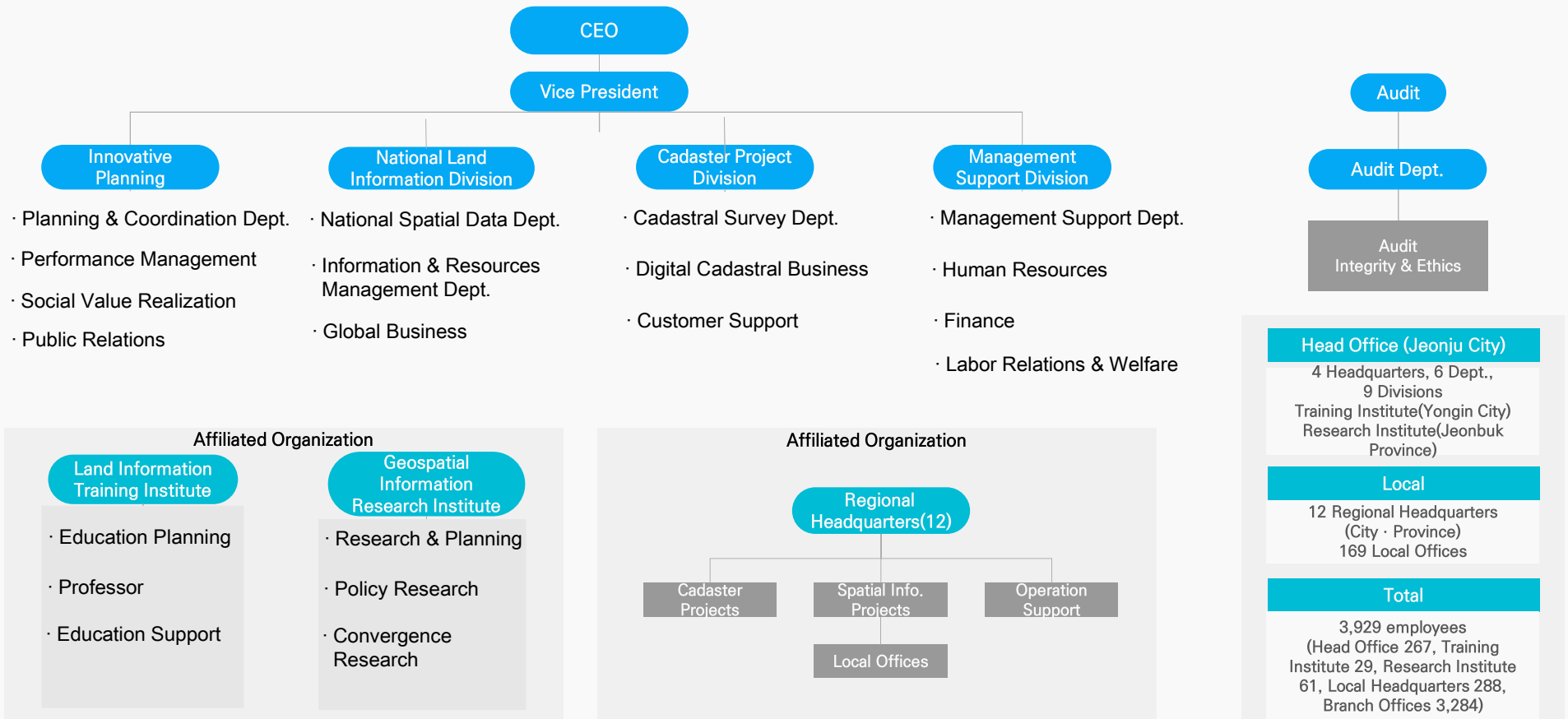
Development of Technologies and Land Surveying



- 1977**  
Establishment of 'Korea Cadastral Survey Corporation'
- 2004**  
Transition to a special corporation by Cadastral Law
- 2012**  
Proclamation of Vision 2025 and New CI/BI
- 2013**  
Transfer to Jeonbuk Innovation City
- 2015**  
Change of name to 'Korea Land and Geospatial InformatiX Corporation(LX)'
- 2017**  
40<sup>th</sup> Anniversary of LX

The history of the space that LX makes, the future of humanity

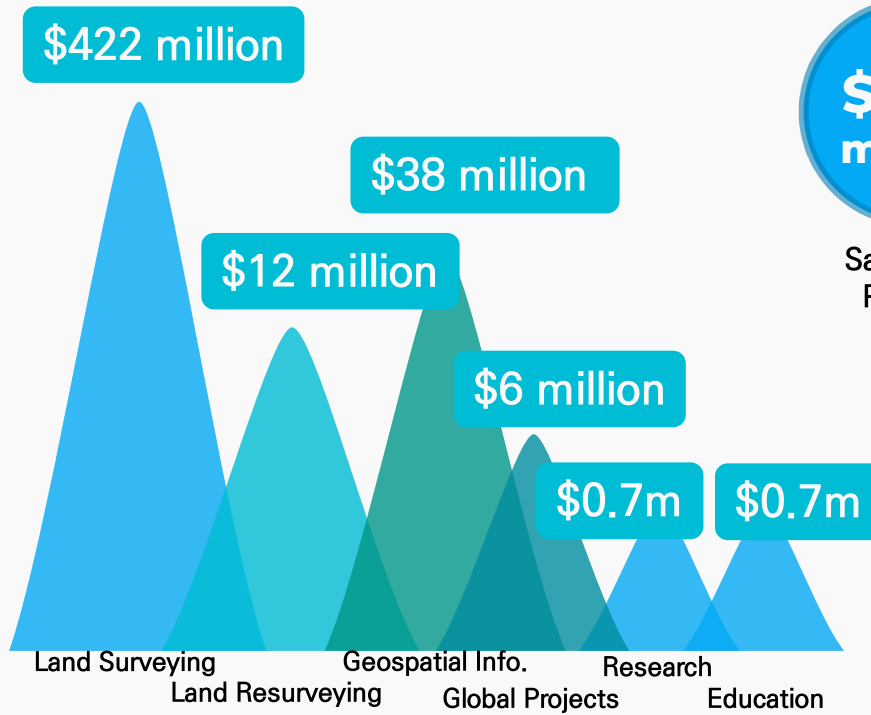
# Organization & Personnel



The history of the space that LX makes, the future of humanity

# Goals

## 2019 Target Revenue



**\$480 million**

Sales from Projects

**A**  
rating

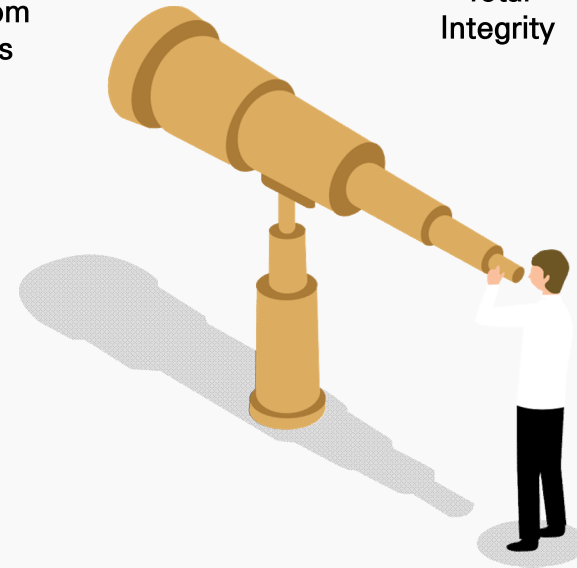
Customer Satisfaction

**1<sup>st</sup>**  
rating

Total Integrity

**A**  
rating

Government Management Assessment



The history of the space that LX makes, the future of humanity

## Awards and Recognitions



### NCS Capability Award 2015

Awarded by the Ministry of Strategy and Finance for \*NCS competence-based recruitment  
\*National Competency Standards



### Public Integrity Award 3 years

Public Integrity Award 2015, 2016, 2017



### Records Management 2017

Presidential Prize for Best Records Management Agency Award



### Publication Award 2016

Korea's Best Publication for Communication Award (2015~2018)



### Best Place to Work 2016

Rated 1<sup>st</sup> in the Public Sector 2016



### Social Contribution Grand Prize (2018)



### Web Service Award 3 years

LX Land Information Allim-e, received Web Public Service Award 2015, 2016, 2017



### Public Relations Award 3 years

Public Relations Award 2016, 2017, 2018



### Stevie Awards Asia Pacific

1st Place in the Innovation of Government Publication (2018)  
3<sup>rd</sup> Place in Public Policy Communication Innovation Award 2015, 2016, 2017

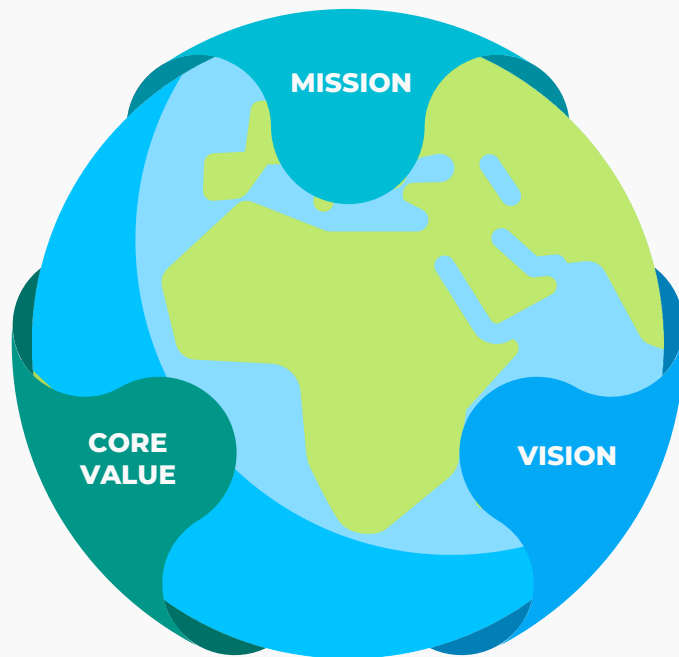


### Innovative Growth Award 4 years

Innovation for Shared Growth Award 4 years in a row

The history of the space that LX makes, the future of humanity

## LX Vision 2030



### Mission

Contribute to the development of the nation by supporting the construction of the national spatial information system, researching and developing the spatial information and cadastral system, and conducting the cadastral survey

### Vision

The National Geospatial Information Platform leading the Smart Society

### Core Values

- The Global Best
- Innovation for the Future
- Responsibility and Trust
- Communication and Harmony

The history of the space that LX makes,  
the future of humanity

## Main Activities

Creating a peaceful world using land information  
Making a way for a Prosperous Korea

- Building of the digital land information and an innovative services
- Implementation of the Smart Land Information Platform
- Globalizing of the Land Information
- Strengthening of R&D Capacity
- Training of an Innovative Personnel
- Creating Social Value through Public Innovation of LX



The history of the space that LX makes, the future of humanity

## Main Activities 01 Cadastral Survey Service

### Subdivision

To divide one lot registered in the cadastral register into two lots or more and register

### Cadastral Location

To indicate the location(point, line, parcel) or occupied area on the cadastral map

### Boundary Relocation

To relocate the boundary points registered in the cadastral register onto the surface of the land

### 'Sharing Happiness' Land Surveying Service

Thorough follow-up management,  
Reduction of charge

### LX Land Allim-e

Check various land related services

### Cadastral Control Point

To establish the control point for the purpose of the cadastral detail surveying

### Registration Conversion

To register the land registered in the woodland register and woodland map in the land register and the registration map

### Land Surveying Processing Center

One-stop service of land surveying from the application to the results  
(<http://baro.lx.or.kr>)

### Project Support of National Policies

One-stop indirect support service to the damaged residents,  
Support for government projects

The history of the space that LX makes, the future of humanity

# Main Activities 02 Cadastral Resurvey Project

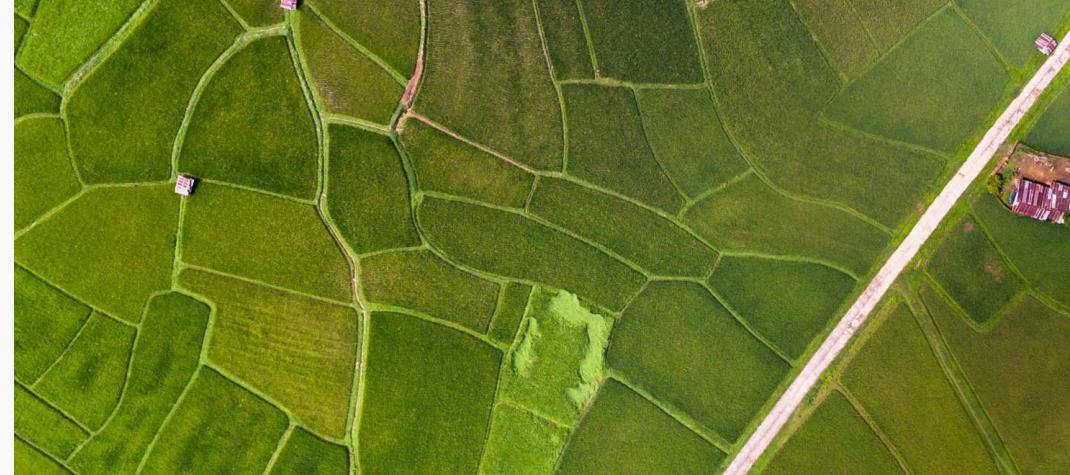
Cadastral Resurvey is a national project that pioneers a Korean Smart Land era based on an accurate cadastral information

The estimated Digital Cadaster completed with Cadastral Resurvey Project

About **37** Million Parcels

About 3.7million parcels will be digitized through the Cadastral Resurvey Project from 2012 to 2030

About \$1.1billion will be invested for the 4<sup>th</sup> Industrial Revolution with the digitized land



Period



2012 ~ 2030

Budget



\$1.1billion

Target



Land with cadastral discrepancy (≅ 5million parcels)  
World Geodetic System Conversion (≅ 27million parcels)

Legal Basis



Special Act on Cadastral Resurvey Project

The history of the space that LX makes, the future of humanity

## Main Activities 03 Spatial Information Service



### Geospatial Information Quality Management

- The geospatial information quality management entity
- Advancement of the continuous cadastral map and secure of the quality

### Geospatial Infrastructure Implementation

- Construction of Defense Property Geospatial Information System
- Verification of National Location Code
- Establishment of National Core Infrastructure(Railways, Highways, Rivers) Geospatial Information
- Support for Property Management System such as public and school land



### Geospatial Information Service

- Support for the monitoring of National Land Information with UAVs
- Quality verification of 3D original form of cultural heritages
- Operation and Service of National Geospatial Information Portal
- Land Studies (flooding trace, empty houses, national public land)
- Support for decision making using big data
- Production and distribution of LX National Land Information Base Map



The history of the space that LX makes, the future of humanity

# Main Functions 04 Overseas Projects



**Land Surveying & System Construction**  
Laos, Vietnam, Morocco, Azerbaijan, Jamaica, Bangladesh, Turkmenistan, Uzbekistan, etc

**Secondee & Capacity Building**  
Cambodia, Azerbaijan, Philippines, Malaysia, Sri Lanka, Indonesia, World Bank, UN-GLTN

**Consulting & Land Administration**  
Haiti, Sri Lanka, Chile, Bangladesh, Uruguay, Indonesia, etc

The history of the space that LX makes, the future of humanity

## Main Functions 05 Education

# Leading the **Geospatial Information Industry** through continuous Education

- **Trustee Education**  
Education for Public Official, Related Employees
- **Global Education**  
International Cooperation in the field of land surveying for foreigners
- **Cyber Education**  
Customized manpower education to train land and geospatial information experts
- **Training Education**  
Training Education to improve the employee's capacity and technical skills
- **Industrial-Educational Cooperation**  
Sharing information through industrial-educational cooperation



The history of the space that LX makes, the future of humanity

## Main Functions 06 Research

# Leading the Geospatial Information Industry through educational foundation

### Global Research HUB leading the geospatial information R&D

- Support for national geospatial information and management of policies
- Development of geospatial information core technology and its industry
- Development of a new business model in the sector of land information
- Support for geospatial information standardization policies and consulting
- Strengthening of industrial-educational cooperation related with geospatial information



The history of the space that LX makes, the future of humanity

## Main Functions 07 Social Contribution

# LX's vision for a peaceful and inclusive world, Giving hope through sustainable social impact



Sharing the capacity  
of LX

- Happiness offering land surveying
- LX Camp
- Heritage protection through 3D surveying
- Land Surveying experience
- Free legal advice



Social contribution

- LX Giving Love
- LX Hope Box
- Making and giving Kimchi



Accompanying LX  
Sharing human resources

- Providing a helping hand to the farming area
- Blood Donation
- Cultural Assets Protection
- Environmental Cleanup



Culture and sports  
experience opportunities

- Ballet lesson
- Professional Cyclist team



**Thank You**

**LX**