

## Optimising Land Information Management in Tribal Lands of Botswana



Emmanuel Tembo & Julian Simela  
University of Botswana  
Department of Civil Engineering

## Outline of presentation

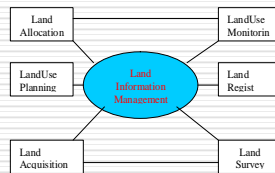


- Introduction
- Administration of land in rural Botswana
- The land information nexus
- The Tribal Land Information System
- Data collection to populate system
- LIS Model
- Conclusion

## Introduction



- Land forms the basis of any economic development and its proper management can only be achieved if information on the said land is available
- Land information collection, however, has always been an expensive exercise and therefore in most areas in rural Botswana information is incomplete



## Administration of land in tribal Land



- Tribal land is administered by Land Boards
- Governed by the Tribal Land Act
- The Act governs access, use and disposal of 71% of land in Botswana



## Land Boards functions



- The granting of rights of use of any land
- The cancellation of any grant of any rights to use any land
- Hearing of appeals from, confirming or setting aside any decision of any subordinate land authority;
- The imposition of restriction on the use of tribal land



## Problems



- Failure to deliver on the said functions
- Presidential Commission (2001) noted the poor state of records both in terms of land board minutes as well as the land inventory.
- Issues of land tenure affect how information is gathered

## Certificate of rights Vs Title Deed

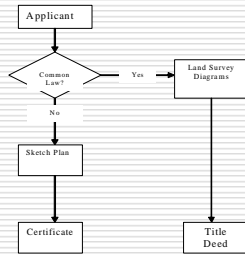


FIG Working Week, 22 -27 May ,  
Athens Greece

7

## Development of the Tribal Land Information Systems

### Previous attempts

- Maun-for physical planning
- Ramotswa- aerial photographs included
- Goodhope- integration of survey data with other data
- LYNIS- Land Inventory for Tribal Areas of Botswana

FIG Working Week, 22 -27 May ,  
Athens Greece

8

## TLIMS

- Tribal Land Information Management System would integrate land administration work.
- The system is to have the following functionalities
  - Land Use Plan,
  - Process Plot Applications,
  - Plot allocations,
  - Change Land Use,
  - Transfer Land Title, Plot Registration, Sub-Divisions, Sub-Leasing / Sub-Letting, Development Control / Compliance, Acquisition and Compensation, Adjudication and Land Board Revenue

FIG Working Week, 22 -27 May ,  
Athens Greece

9

## Data collection

- For system to work geographical and attribute data need to be collected
  - Defining Boundaries-includes adjudication
  - Attribute information- ownership, nature of use of the land and original use for which land was allocated.

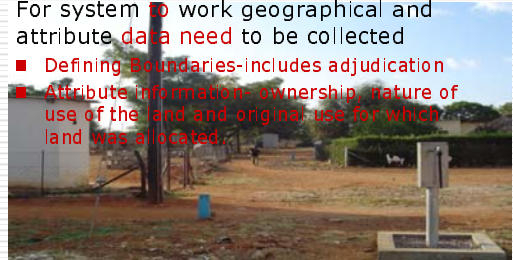


FIG Working Week, 22 -27 May ,  
Athens Greece

10

## Defining Boundaries

1. Use of Orthophotos and DXF plans from Department of Surveys and Mapping- All major villages are being mapped at 1:5000
2. Land Registry data-owner, marital status etc

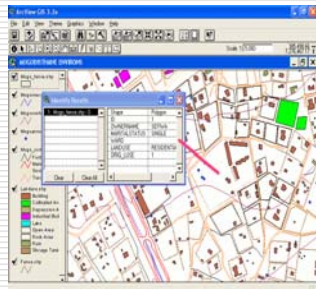


FIG Working Week, 22 -27 May ,  
Athens Greece

11

## Land Information Model-Schematic data flow

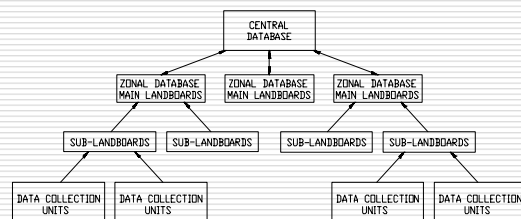


FIG Working Week, 22 -27 May ,  
Athens Greece

12

## LIS Model

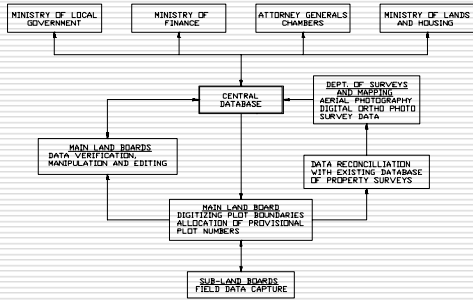


FIG Working Week, 22 -27 May ,  
Athens Greece

13

## Conclusion

- Land Information System must form the basis of all spatial data and would be used in the management of land in rural areas.
- Though the collection of data required to populate the land information system seems onerous it is a process that needs to be done if the information system will truly be meaningful
- integration of customary and statutory systems remains a major challenge for policy in Africa and more work is required to clarify both the technical and institutional options available



FIG Working Week, 22 -27 May ,  
Athens Greece

14