

UNCLASSIFIED

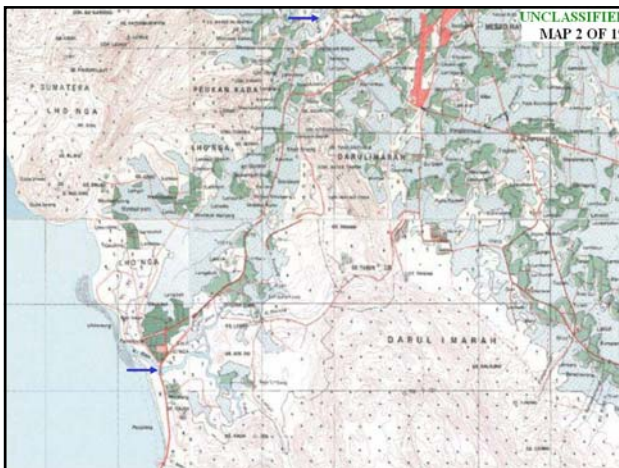
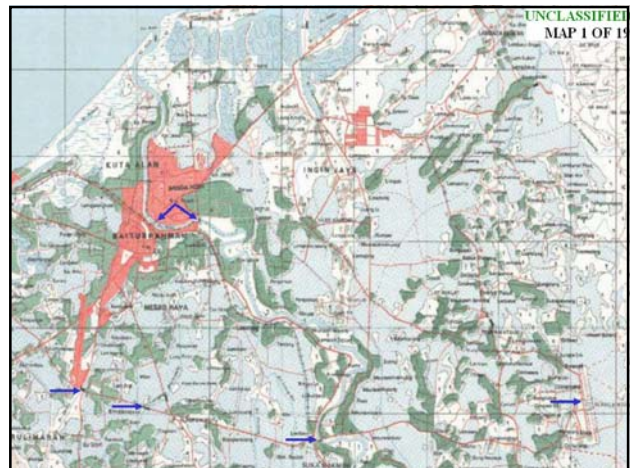
Banda Aceh to Meulaboh
Map Chips w/ Linked Images*

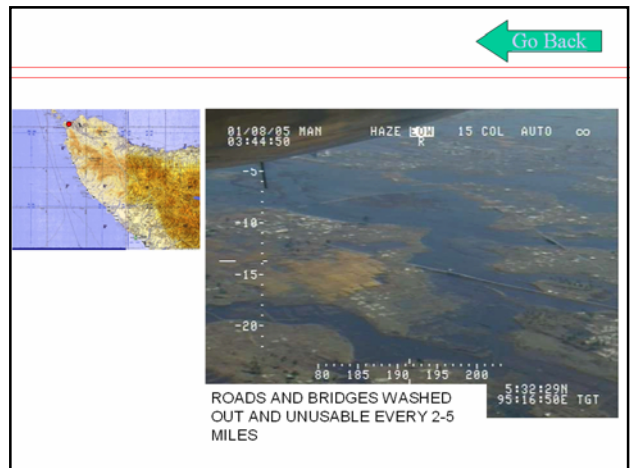
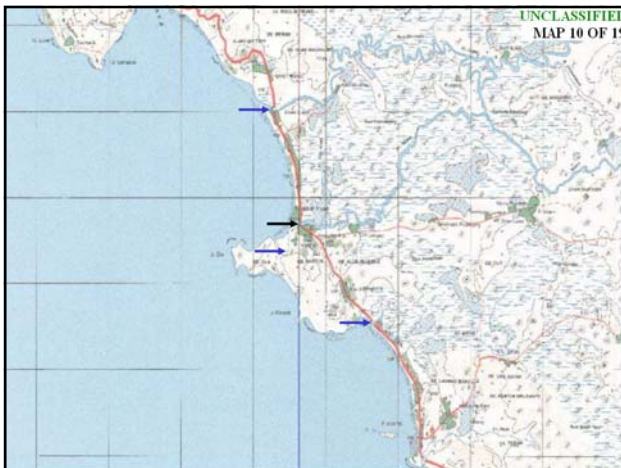
Blue Arrows = Linked Image
Black Arrows = No Image Available

* All plots are approximate based on coordinates depicted on images.

UNCLASSIFIED

Slide 1 of 88









Homepage | Favorites | History | Help
http://www.apan-info.net/apanweb/default.asp

apan
Asia-Pacific Area Network

Monday, March 07, 2005

WELCOME!

The purpose of this web-based Civil Military Operations Center (CMOC) is to provide an easy-to-use tool for people to assist in a given geographic area. The goal is to match validated humanitarian needs to resources available from government organizations, non-government organizations and individuals. It is an electronic market place where goods, resources and capabilities are matched to help the local residents.

epicentre
Date: 20/12/2004
Time: 00:08:50 UTC
Location: 3.309 95.79E
Magnitude: 8.9

Source: US Office for the Coordination of Humanitarian Affairs

23:30:29
Local Hawaii (US) Time
09:30:29
UTC/GMT Time

Tsunami

Sum,Map,Cont,Show,Map

Multinational Forces SOP

version 1.4a
Index
Highlights
Operational Chart

Browser: Firefox Version: 1.5.0.10
 URL: http://www.apan-info.net/tsunami/camp_main.asp

CAMP MAIN MAP

22:26:19
 of Hawaii (US) Time
 08:26:19
 UTC/GMT Time
 8:02Z MAR 2005

Click on a shaded area to zoom in to that portion of the map.

Multinational Forces SOP
 version 1.4a
 Index
 Highlights
 1. Operational Start
 2. Essential Strategic
 3. CTF Planning
 4. Humanitarian
 5. Detailed Planning
 Process - CSF

Browser: Firefox Version: 1.5.0.10
 URL: http://www.apan-info.net/tsunami/aceh.asp

BANDA ACEH

Back to Main Map

22:27:32
 of Hawaii (US) Time
 08:27:32
 UTC/GMT Time
 8:02Z MAR 2005

Click on a shaded area to zoom in to that portion of the map.

Multinational Forces SOP
 version 1.4a
 Index
 Highlights
 1. Operational Start
 2. Essential Strategic
 3. CTF Planning
 4. Humanitarian
 5. Detailed Planning
 Process - CSF

Browser: Firefox Version: 1.5.0.10
 URL: http://www.apan-info.net/tsunami/new_map.asp?map=aceh_50

ACEH_50 MAP CAMP INFORMATION

Main Map | Aceh Map

22:28:09
 of Hawaii (US) Time
 08:28:09
 UTC/GMT Time
 8:02Z MAR 2005

Click on a camp icon to view detailed information.

Legend:
 Critical (Red star)
 Immediate (Yellow star)
 Stable (Green star)

Latest Camp Updates

Browser: Firefox Version: 1.5.0.10
 URL: http://www.apan-info.net/tsunami/new_map.asp?map=aceh_50

ACEH_50 MAP CAMP INFORMATION

Main Map | Aceh Map

22:29:01
 of Hawaii (US) Time
 08:29:01
 UTC/GMT Time
 8:02Z MAR 2005

Click on a camp icon to view detailed information.

Legend:
 Critical (Red star)
 Immediate (Yellow star)
 Stable (Green star)

Latest Camp Updates

Click Info
 Name: Aceh 50
 Location: 052922N 0951420E
 Size: Not reported
 Connected Via: LOC
 Relief Via: org
 Food: UNK
 Water: UNK
 Medical: UNK
 Notes: Probably mobile camp

Browser: Firefox Version: 1.5.0.10
 URL: http://www.apan-info.net/tsunami/new_map.asp?map=aceh_50

ACEH_50 MAP CAMP INFORMATION

Main Map | Aceh Map

22:28:41
 of Hawaii (US) Time
 08:28:41
 UTC/GMT Time
 8:02Z MAR 2005

Click on a camp icon to view detailed information.

Legend:
 Critical (Red star)
 Immediate (Yellow star)
 Stable (Green star)

Latest Camp Updates

Click Info
 Name: Aceh Camp 1
 Location: 052922N 0951420E
 Size: Not reported
 Connected Via: LOC
 Relief Via: org
 Food: UNK
 Water: UNK
 Medical: UNK
 Notes: Probably mobile camp

Browser: Firefox Version: 1.5.0.10
 URL: http://www.apan-info.net/tsunami/new_map.asp?map=aceh_49

ACEH_49 MAP CAMP INFORMATION

Main Map | Aceh Map

22:30:30
 of Hawaii (US) Time
 08:30:30
 UTC/GMT Time
 8:02Z MAR 2005

Click on a camp icon to view detailed information.

Legend:
 Critical (Red star)
 Immediate (Yellow star)
 Stable (Green star)

Latest Camp Updates

ACEH_49 MAP CAMP INFORMATION

Main Map | Aceh Map

Critical
Immediate
Stable

Latest Camp Updates

22:30:48
of Hawaii (US) Time
08:30:48
UTC/GMT Time
030Z MAR 2005

Click on a camp icon to view detailed information.

Camp Information:
Name: Lempung (Purung Kala)
Location: 052119N 095205E
Size: 630
Connected: No
Road Via: Air Boat access only
Fuel Via: No
Food: 8,490 kg./Mo.
Water: 170,200 Litro.
Medical: UN
Notes: Insufficient number of latrines
UNTRK #6

ACEH_45_46 MAP CAMP INFORMATION

Main Map | Aceh Map

Critical
Immediate
Stable

Latest Camp Updates

22:31:22
of Hawaii (US) Time
08:31:22
UTC/GMT Time
031Z MAR 2005

Click on a camp icon to view detailed information.

ACEH_45_46 MAP CAMP INFORMATION

Main Map | Aceh Map

Critical
Immediate
Stable

Latest Camp Updates

22:32:17
of Hawaii (US) Time
08:32:17
UTC/GMT Time

Click on a camp icon to view detailed information.

Camp Information:
Name: Pulau Rusa
Location: 051648N 095125E
Size: 75-100
Connected: No
Road Via: Sea, Foot, motorcycle traffic only
Fuel Via: No
Food: 1,000 kg./Mo.
Water: 22,500 Litro.
Medical: UN
Notes: No TN present, UN assessment priority

CALANG

Back to Main Map

22:33:36
of Hawaii (US) Time
08:33:36
UTC/GMT Time
033Z MAR 2005

Click on a shaded area to zoom in to that portion of the map.

Multinational Forces SOP
version 1.4a
Index
Highlights
1. Operational Start Points
2. Essential Strategic Guidance
3. CTF Elements
4. Humanitarian Relief

Multinational Force Standing Operating Procedures
Version 1.4a
25 August, 2004

MNF SOP Brief | What is MPAT | Email MNF SOP Staff with comments

face

A. MULTINATIONAL SOP FOCUS AND NATURE OF MNF OPERATIONS
Chapter A.1. Introduction - Asia Pacific Shared Interests, MNF SOP Objectives, Applicability, and MNF Operations
Section A.1. MNF SOP Foundation, Asia-Pacific Region Shared Interests
Section B. MNF SOP Military Objectives, Applicability and Operational Focus
Section C. Complex Nature of Multinational Operations / Principles of Unity of Effort

B. MULTINATIONAL SOP OPERATIONAL START POINTS AND FOUNDATIONS
Chapter B.1. General Operational Start Points - The Basis for Unity of Effort
Chapter B.2. Initial Strategic Coordination / Coordination Phase
Chapter B.3. Command / Control / Coordination - Multinational Relationships
Annex A. Command and Control - CTF Organizational Options
Chapter B.4. CTF Force Sizing
Chapter B.5. CTF Operational and Organizational Concepts
Annex A. CTF Operational Planning Considerations
Annex B. CTF FOY Operational & Essential Personnel
Appendix 1. CTF Primary and Personnel Staff
Annex C. Multinational Planning Augmentation Team
Chapter B.6. CTF Planning Process
Chapter B.7. Military Operations Other Than War

Chapter B.7. Military Operations Other Than War
Annex A. Military Operations Other Than War - Definitions
Annex B. Peace Operations
Annex C. Humanitarian Assistance / Disaster Relief
Annex D. United Nations Decision Making (Peace & Humanitarian Operations)
Annex E. Dislocated Civilians (Dislocats)
Annex F. Transnational Threats (Terrorism, Criminal Activity, CBRNE)
Annex G. Disarmament, Demobilization, and Re-Integration
Annex H. Consequence Management (CM)

C. CTF HEADQUARTERS FUNCTIONS, OPERATIONS, AND PLANNING
Chapter C.1. Personnel
Chapter C.2. Intelligence
Annex A. C-2 Notational Manning and Duty Descriptions
Annex B. Reports
Chapter C.3. Operations
Annex A. Coalition / Combined Operations Center
Annex B. C3 COFS Cell
Annex C. C3 FOFS Cell
Annex D. Information Operations (IO) Cell
Annex E. Force Protection
Annex F. Rules of Engagement
Annex G. Nonlethal Weapons Planning
Annex H. Chemical, Biological, Radiological, Nuclear or High Yield Explosive - Toxic Industrial Material (CBRNE-TIM)
Appendix 1. Threat Capabilities
Appendix 2. Chemical Threats
Appendix 3. Biological Threats
Appendix 4. Radiological Threats
Appendix 5. CBRNE Reports
Appendix 6. Glossary
Annex I. Coalition / Combined Force
Annex J. Coalition / Combined Force Air Component Commander
Annex K. Air Operations

Chapter C-6. Communications and Information Systems (CIS)

- Annex A. CIS Planning Considerations
 - Appendix 1. CTF CIS Support Plan Format
- Annex B. Communications Receipts
 - Appendix 1. CIS STREP Format
 - Appendix 2. COMSTAT Format
 - Appendix 3. COMMSOP Format
- Annex C. Systems Management
- Annex D. Communications Security
- Annex E. Example CTF HQ CIS User Quarterly

Chapter C-7. Civil Military Operations

- Annex A. Coalition or Combined (CMOC) Task Force
- Annex B. Civil Military Operations Center (CMOC)
- Annex C. Key International and Non-Government Organizations
- Annex D. Web-Enabled Civil Military Operations Center (CMOC)

Chapter C-8. Information Management

- Annex A. Decision Points and Considerations (CIS)
- Annex B. Web Management
- Annex C. Information Exchange Requirements
- Annex D. Battle Rhythms
- Annex E. Requests for Information
- Annex F. Collaboration Exchange Requirements
- Annex G. System Protection Measures
- Annex H. Standard Operating Procedures
- Annex I. Virtual Information Center (VIC) and Asian Pacific Area Network (APAN)

Chapter C-9. Legal

Chapter C-10. Public Affairs

- Annex A. Public Affairs Estimate
- Annex B. Public Affairs Guidance
- Annex C. Sample Public Affairs OPORD Annex
- Annex D. Coalition/Combined Information Bureau and Advanced Echelon Planning
- Appendix 1. Coalition/Combined Information Bureau Equipment and Staffing

Chapter C-6
COMMUNICATIONS AND INFORMATION SYSTEMS
(CIS)

A. Purpose. This chapter describes responsibilities, procedures and proposed organizational structure for Communications and Information Systems (CIS) needed to plan, resource, and manage communications, electronics and information systems for the CTF. The accompanying Annexes provide details on what needs to be considered in order to provide CIS support to a CTF supporting a MNF.

The following critical issues need to be addressed early in the CIS planning process and kept in mind throughout the planning and execution phases:

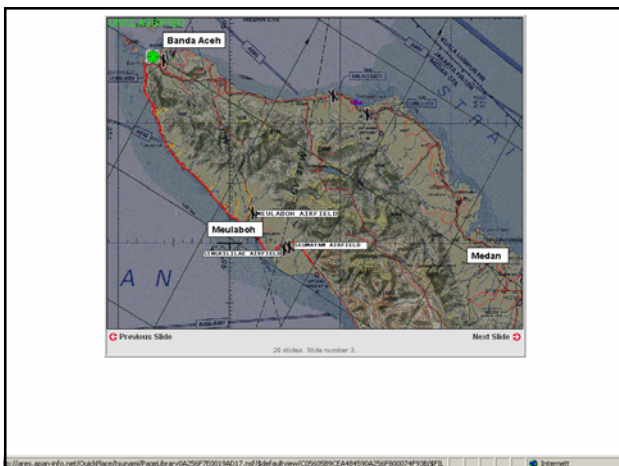
- Interoperability.** The ability of systems, units, or forces to provide services to and accept services from other systems, units, or forces and to use the services so exchanged to enable them to operate effectively together, or the condition achieved among communications-electronics systems or items of communications-electronics equipment when information or services can be exchanged directly and satisfactorily between them and/or their users.
- Reliability.** (Needs clarification/further definition) The need to take into account National and MNF security levels and accreditation relating to networks, equipment and information. Refer to Chapter 8, Information Management for details.

B. Organization.

- The organization of the CIS staff is critical to the overall accomplishment of the CTF mission. It is imperative that the CIS organization capitalizes on the capabilities of the MNF participating nations and that the CIS organization has a cross section of the CTF participants assigned to the various staff positions. Teamwork and partnerships must be developed and both formal and informal agreements must be prepared designating who furnishes, installs, operates and maintains key network systems and hubs as well as determining the CIS staffing. Teamwork, partnership and agreements are required for the direct and effective CIS support to the CTF HQ and CTF components.

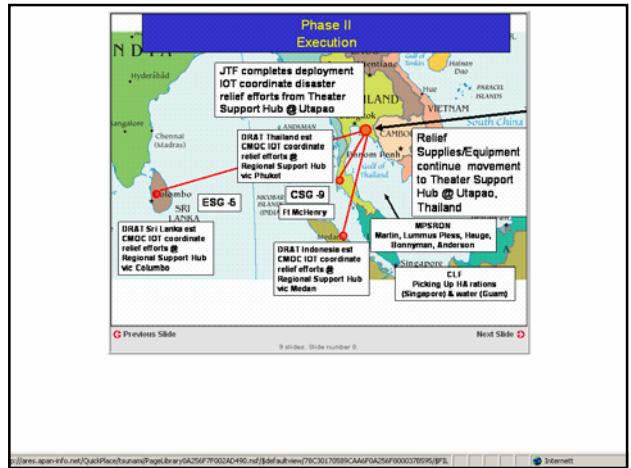
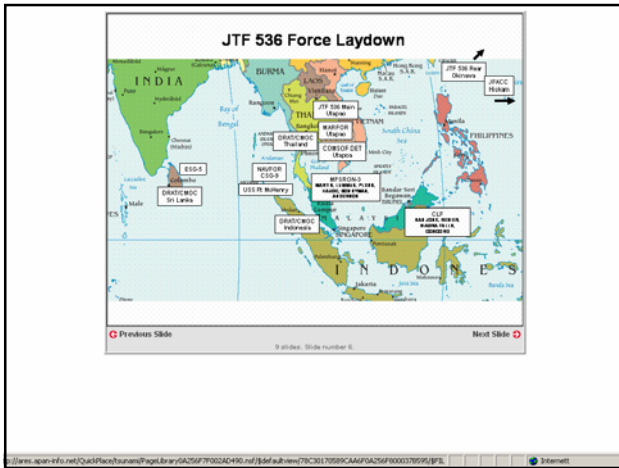
Joint Task Force 536
Civil Military Operation Center
Indonesia

28 slides, Slide number 1. Next Slide



CONOPS Brief
Southeast Asia HA Contingency
31 Dec 04

28 slides, Slide number 4. Previous Slide Next Slide



Operation Unified Assistance: Tsunami Relief Information Exchange

NEW INFORMATION → Updated Information ← New in last 24 hours

Click here for → Photos courtesy of Joint Combat Camera Center

LESSONS LEARNED (for coast/pw contact: APANAccessReq@vic-info.org)

SPECIAL - CSF536 Engineers: WEST COAST SUMATRA TRANSPORTATION INFRASTRUCTURE A Progressive Study of Tsunami Damage and other critical reports on Health and IDP situation. Password required. Contact mp@apan-info.net for questions

PACOM Info	CSF-536	CSG Sri Lanka	JACG-FS	SITREPS
		CSG Indonesia		CSF-636
		CSG Thailand		CSG-Indonesia
				CSG-Thailand
				CSG-Sri Lanka
				UK

Humanitarian Resources:

Relief Web	United Nations Joint Logistics Center (UNJLC)	World Food Program (WFP)
Virtual Information Center	International Committee of the Red Cross (ICRC)	Pacific Disaster Center (PDC)

Welcome to Maps and Imagery Site

Click here for Commercial Satellite Imagery

Click here for Other Types of Imagery

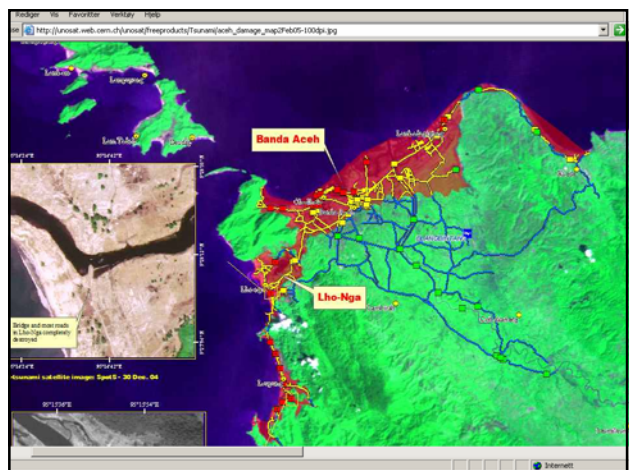
Click here for Map Products

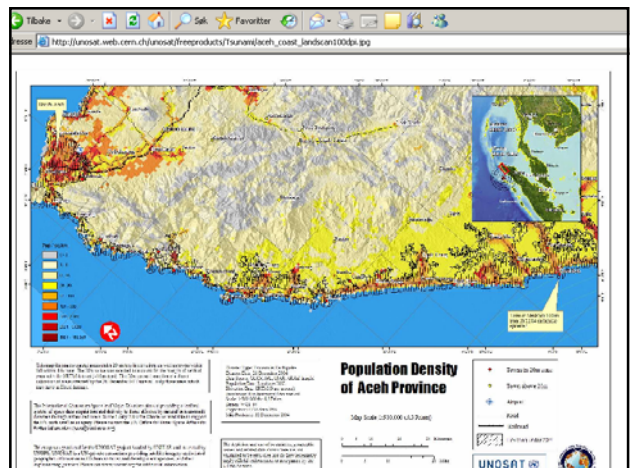
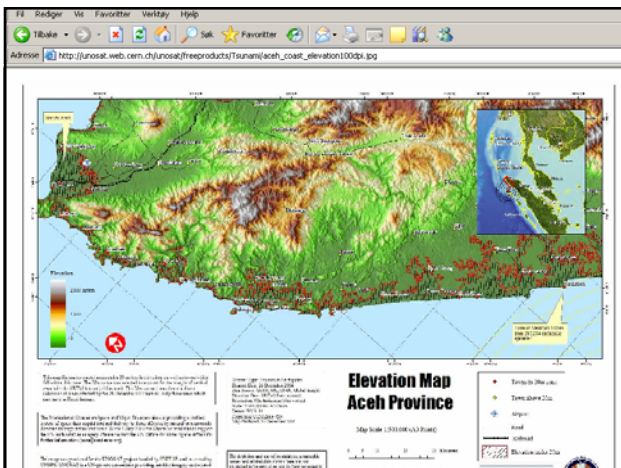
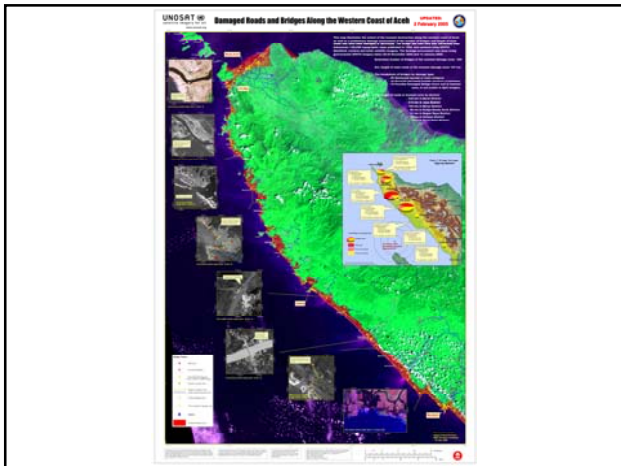
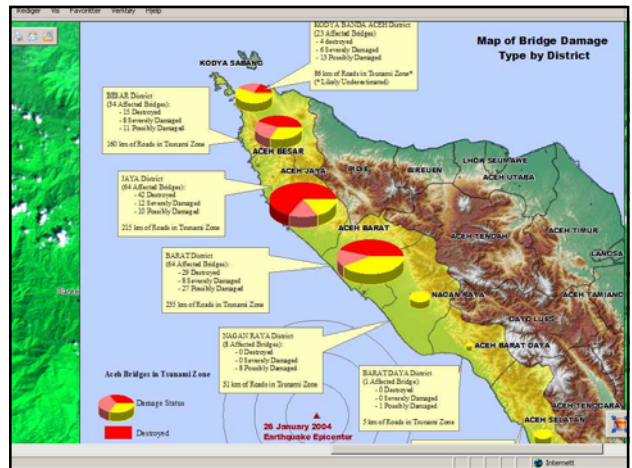
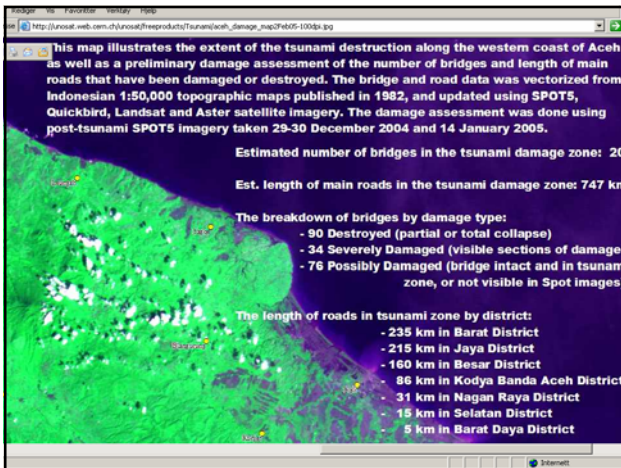
Click here for Combat Camera

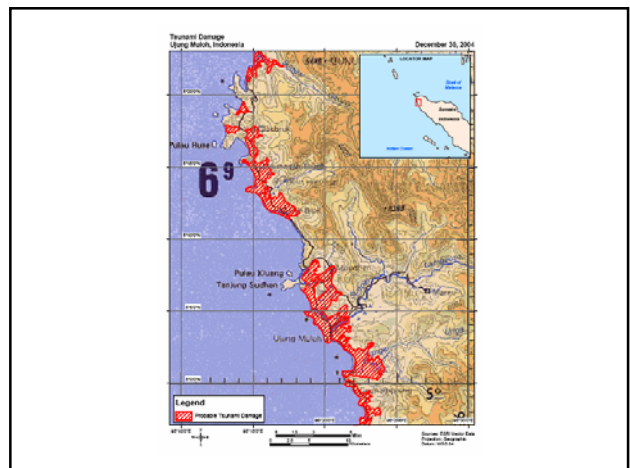
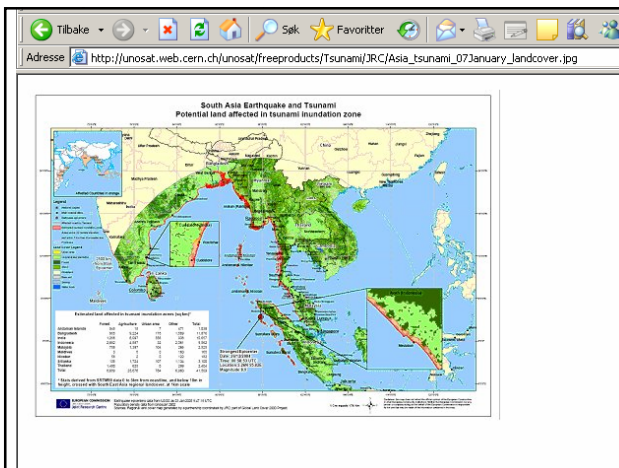
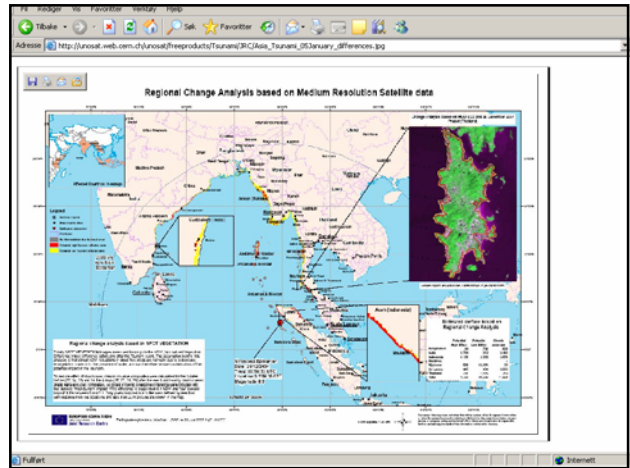
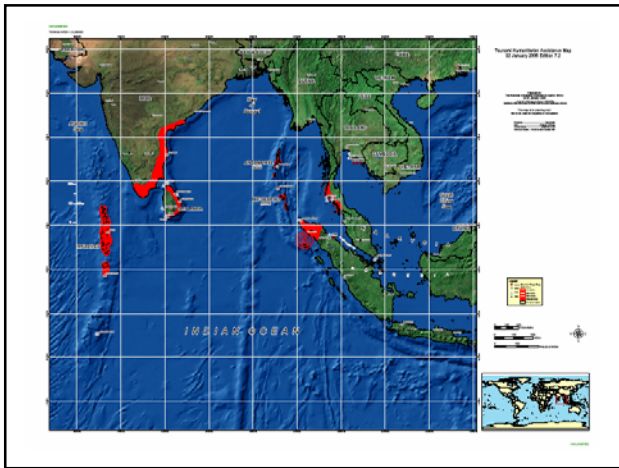
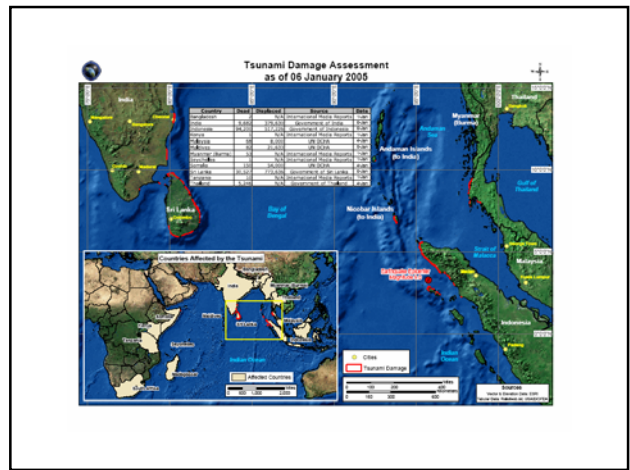
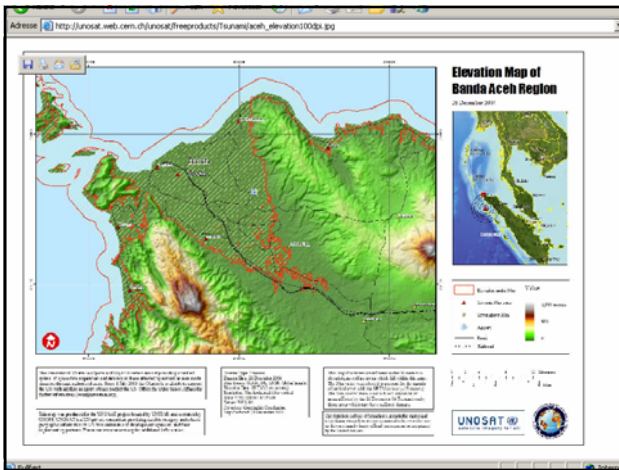
unosat.web.cern.ch - /unosat/freeproducts/Tsunami/

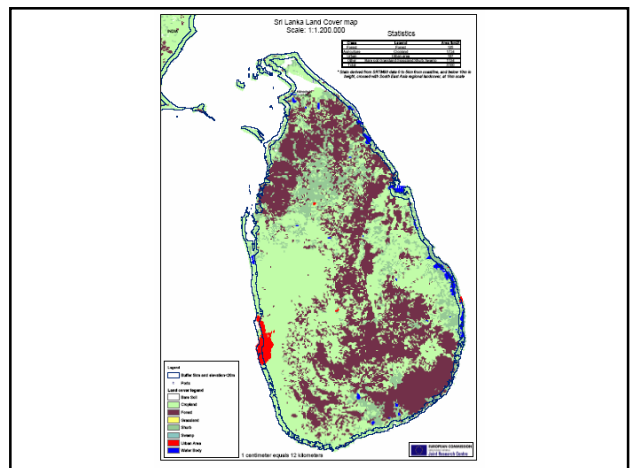
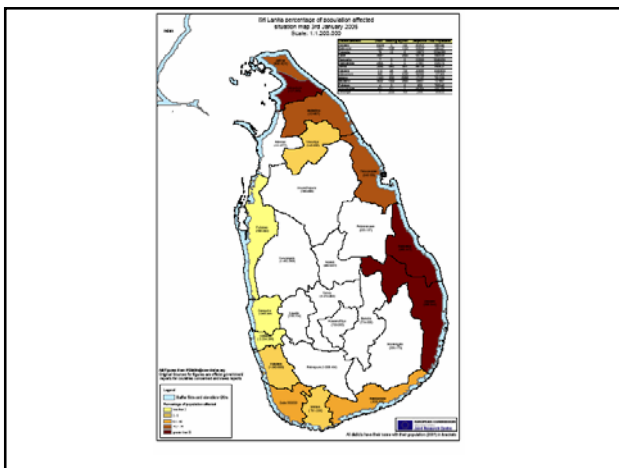
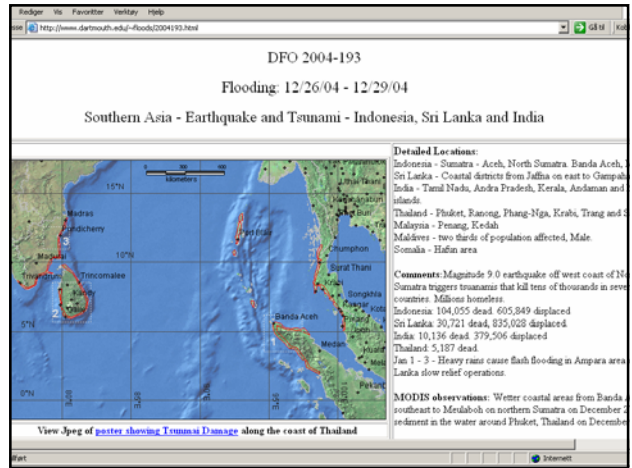
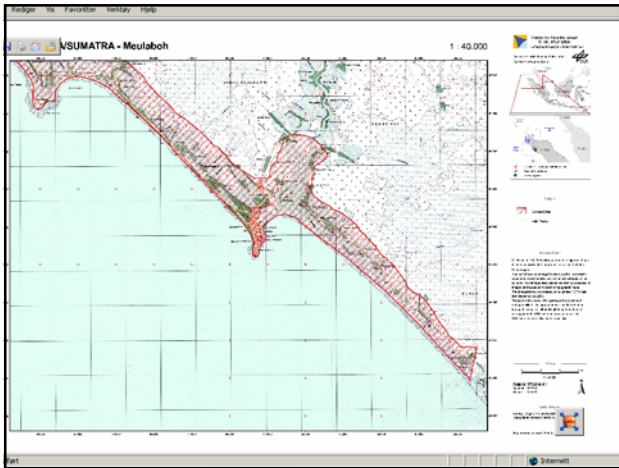
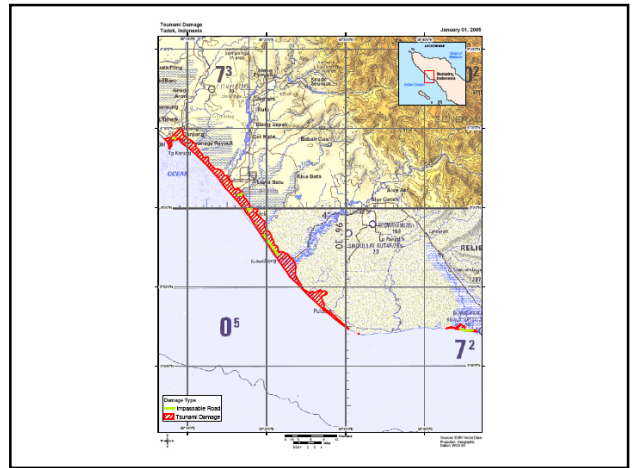
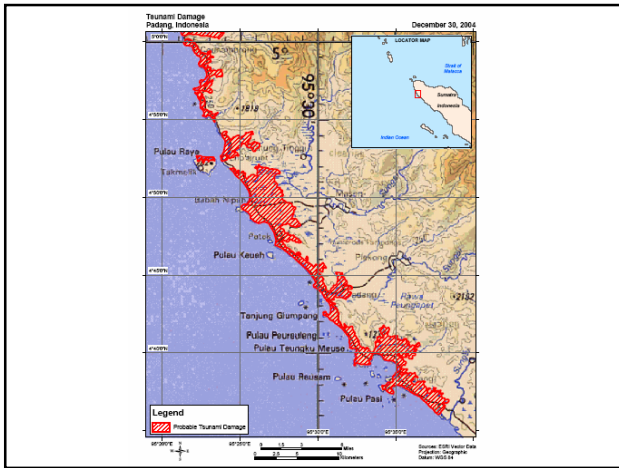
Parent Directory

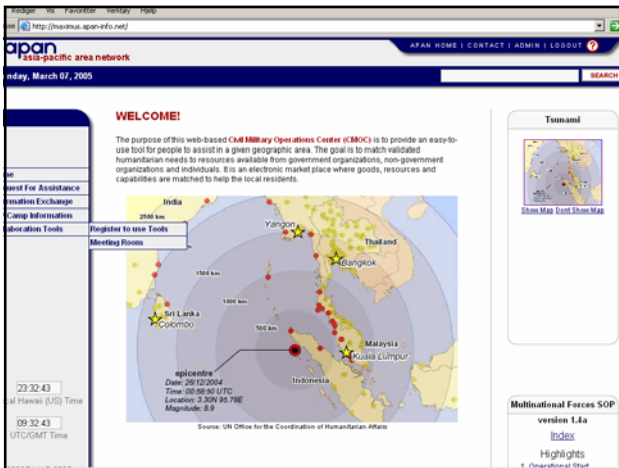
3794	-regional_map100dpi_icon.jpg
353711	msb_coast100dpi.jpg
3593	msb_coast100dpi_low.jpg
1700090	msb_coast100dpi.jpg
324997	msb_coast_elevation100dpi.jpg
3536	msb_coast_elevation100dpi_low.jpg
1322979	msb_coast_elevation100dpi.jpg
326697	msb_coast_elevation100dpi_low.jpg
3569	msb_coast_landcan100dpi_low.jpg
1424681	msb_coast_landcan100dpi.jpg
4369352	msb_damage_map1024dpi_low.jpg
4027849	msb_damage_map1024dpi.jpg
897533	msb_damage_map1024dpi_low.jpg
6712	msb_damage_map1024dpi_low.jpg
872998	msb_damage_map1024dpi.jpg
9041	msb_damage_map1024dpi_low.jpg
4821430	msb_damage_map1024dpi_low.jpg
865402	msb_damage_map1024dpi_low.jpg
7044	msb_damage_map1024dpi_low.jpg
4763770	msb_damage_map1024dpi_low.jpg
879366	msb_damage_map1024dpi_low.jpg
9185	msb_damage_map1024dpi_low.jpg
4839122	msb_damage_map1024dpi_low.jpg
273855	msb_elevation100dpi.jpg
3433	msb_elevation100dpi_low.jpg
1095397	msb_elevation100dpi.jpg
350208	msb_elevation100dpi_low.jpg
3764	msb_elevation100dpi_low.jpg
1522981	msb_elevation100dpi_low.jpg
284152	msb_landcan100dpi.jpg
3696	msb_landcan100dpi_low.jpg
1145091	msb_landcan100dpi_low.jpg
<dir>	banda_msb
<dir>	dlr











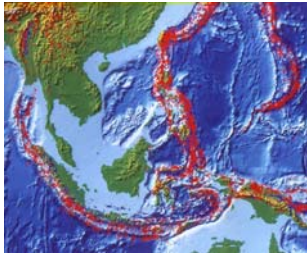
**Ministry of Research and Technology
Republic of Indonesia**

**National Center for Disaster
Mitigation**

(Towards human survival in Southeast
Asia, Indian Ocean Region and the
Pacific)

Background

Tectonic Configuration of Indonesia



Indonesian earth segment, the coastal and marine waters and the atmospheric conditions are quite dynamic and potentially prone to practically all sorts of known natural hazards in the forms of:

- Tectonic and volcanic earthquakes
- Tsunami and the more subtle sea level rise
- Volcanic eruptions
- River floods and landslides
- Droughts and forest fires
- Storm surges and hurricanes

