

RURAL AREA FACE TO METROPOLITAN CITY

(Case study : Barito Kuala, South Kalimantan, Indonesia)



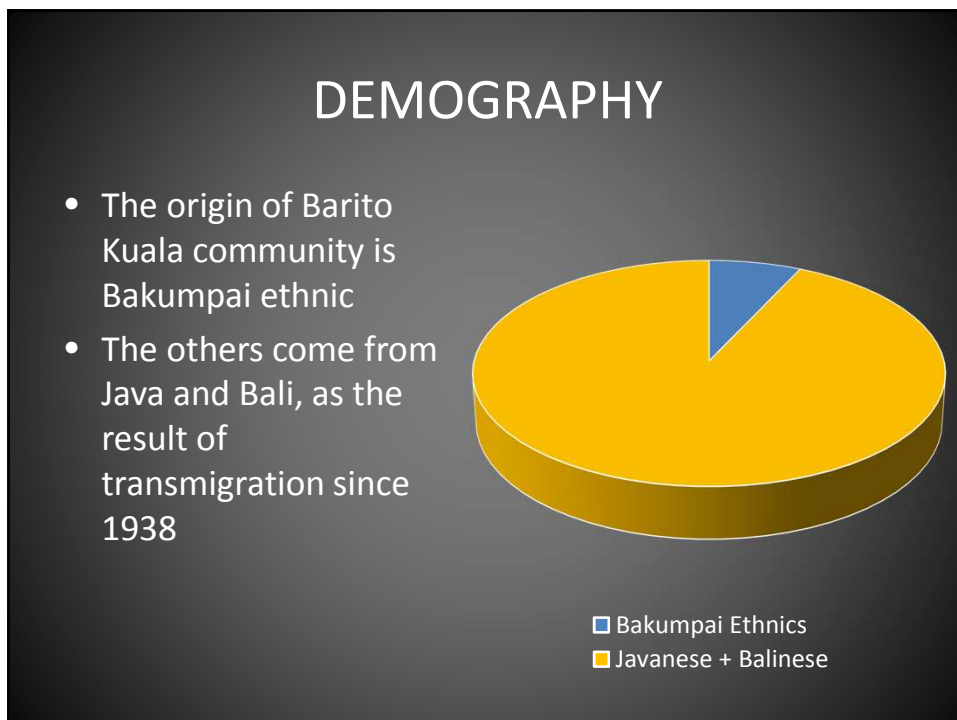
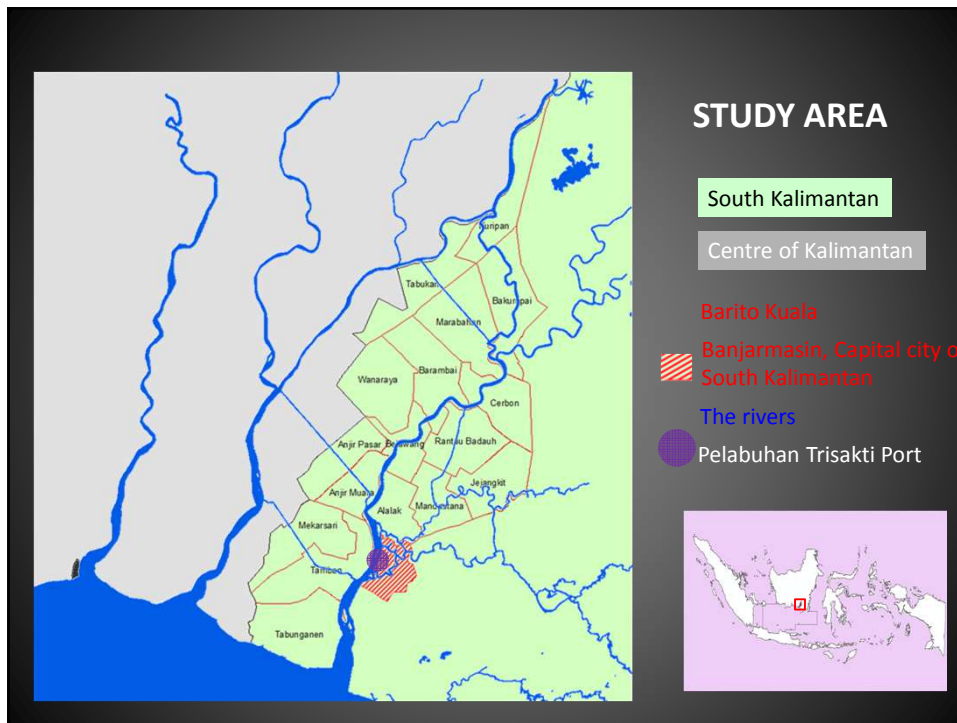
Sri Karina BANGUN



FIG WORKING WEEK 2015
17-21 May 2015

From the Wisdom of the Ages to the Challenges of the Modern World

- Study Area
- Potential of Barito Kuala
- Demography Batola Banjarmasin
- Barito Kuala 2007 - 2012
- The challenge of Barito Kuala



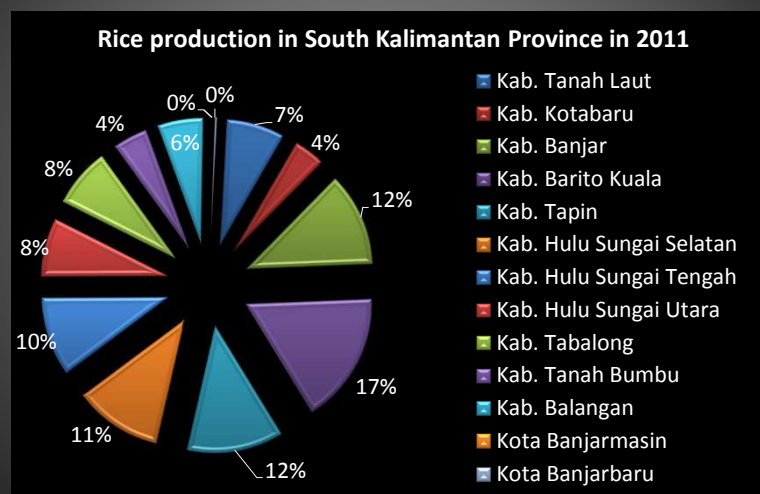
TOPOGRAPHIE

- Wetland : most of its territory surrounded by the river and swamp which is a tidal marsh
- Height of 0.2 to 3 meters above sea level
- The level of soil acidity reached pH 3-5
- Barito Kuala area's grows the Galam forest



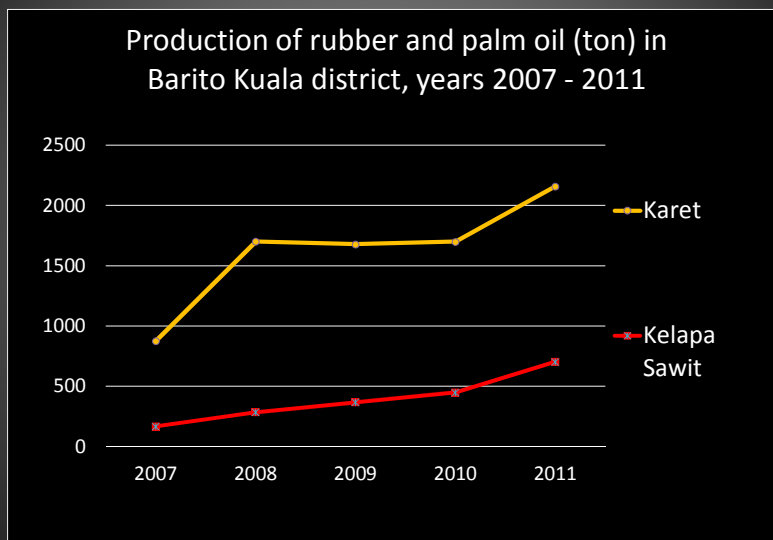
POTENSIAL OF BARITO KUALA

1. The biggest rice producer of South Kalimantan Province



Source : www.bps.go.id, Central Agency on Statistics, Indonesia

2. Potensial in palm Oil Production



Source : Report « Barito Kuala in number »

3. Large potential of methane gas or Coal Bed Methane (CBM)

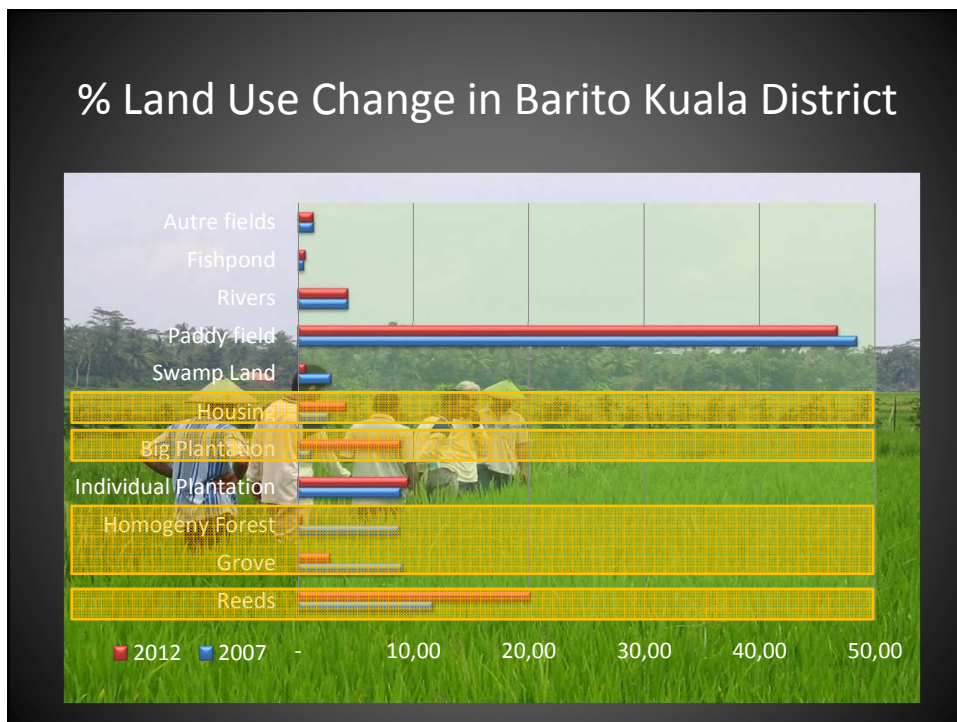
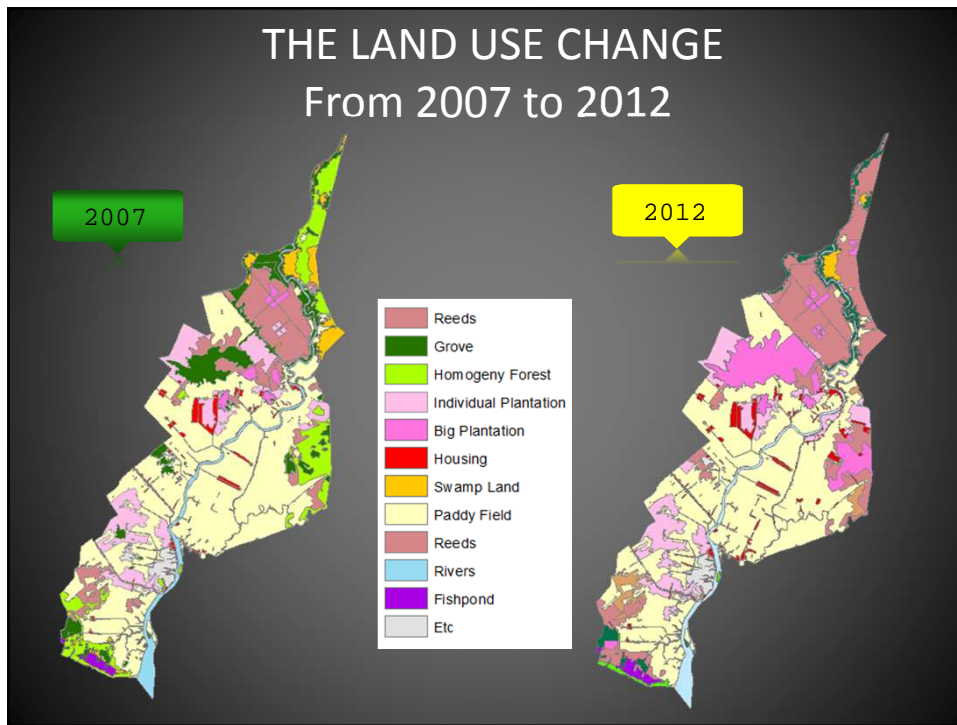
Coal bed methane (CBM) is a source of energy that is relatively new.

CBM is usually found in the underground of non-traditional coal mines, in between the cracks of coal.

Indonesia is the five largest CBM potential in the world, with resource reach 453.3 trillion cubic (tcf)



CBM potential in Barambai region, Barito Kuala, estimated at 101.6 billion m³

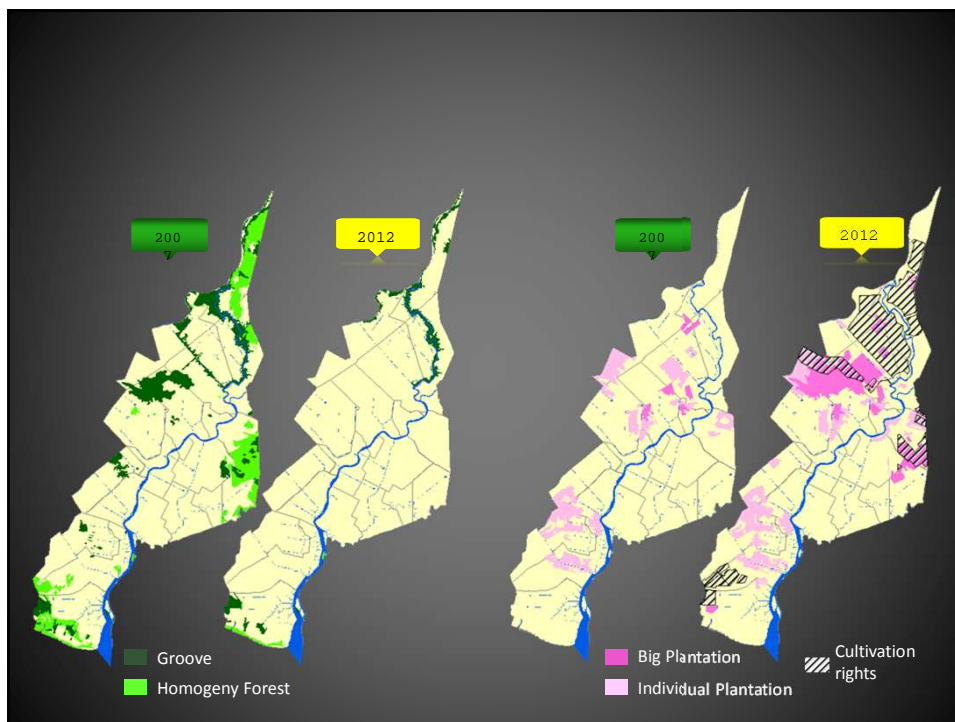


FOREST

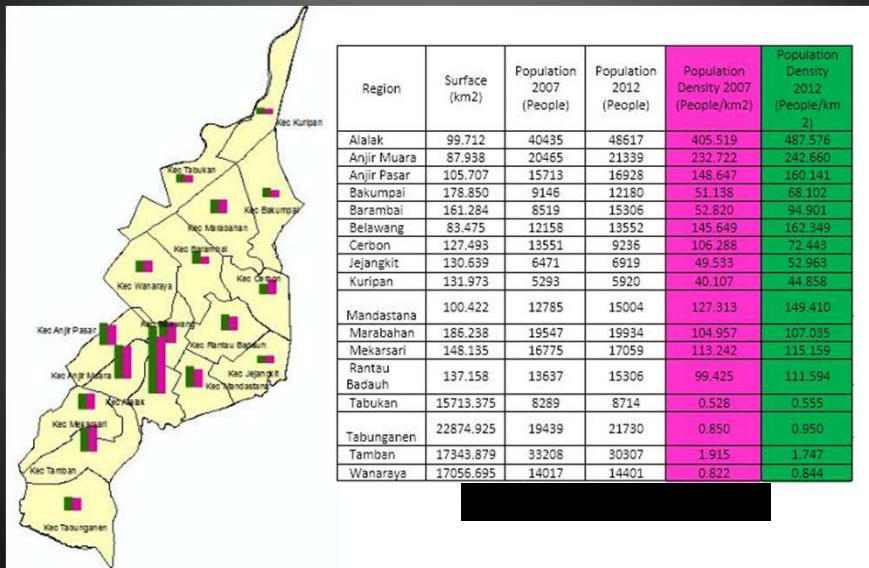
- Two types of forest : homogeny forest and grove.



| No | Land Use | Area (Ha) | | Land use Changement | |
|----|-----------------|-----------|-----------|---------------------|----------------|
| | | Year 2007 | Year 2012 | Area (Ha) | Changement (%) |
| 1 | Grove | 21,746.53 | 6,917.47 | -14,829.06 | -68.19 |
| 2 | Homogeny Forest | 21,223.85 | 1,093.15 | -20,130.70 | -94.85 |



HOUSING



New Developpement



Background Issues

- The central of economic activity in Banjarmasin caused saturation in Banjarmasin.
- Economic sectors, has not been able to improve the quality of life
- Uneven population distribution (high density of Banjarmasin).
- The number of poor people are still concentrated in Banjarmasin and Barito Kuala.
- Building density region has the potential emergence of slums and fire hazard prone.
- Pollution of rivers and sea water intrusion leads to reduced water quality.

METROPOLITAN CITY OF BANJARBAKULA

Banjarbakula
 Highway
 Artery Roads
 Second Barito Bridge

