

**Presented at the FIG Working Week 2016,
May 2-6, 2016 in Christchurch, New Zealand**



FIG Working Week 2016

CHRISTCHURCH, NEW ZEALAND 2-6 MAY 2016

Recovery

from disaster

Organised by



Platinum Partners



Diamond Partner





Collaborative and Sustainable Surveying Education in South Australia

Presentation By Michael NIETSCHKE
Chairman Surveyors Board of South Australia

Co Authors David BRUCE, Paul CORCORAN, and
Scott ALLEN



Outcome of collaboration between industry and University of South Australia is the continuation of surveying education in South Australia that produces a local surveying workforce that has a global outlook on surveying and geospatial business.



FIG Working Week 2016

CHRISTCHURCH, NEW ZEALAND 2-6 MAY 2016

Recovery

from disaster

CELEBRATING
25
YEARS



Search for

[UniSA home](#) > [Programs at UniSA](#) > [Master of Surveying](#)

[2015](#) | [2016](#)

Master of Surveying IMSY

Overview

Aim

Entry requirements

Content and structure



Platinum Partners:



Diamond Partner





from disaster

Chart 5.9: South Australia Licensed and Practising Surveyors (1.5% Productivity Growth)

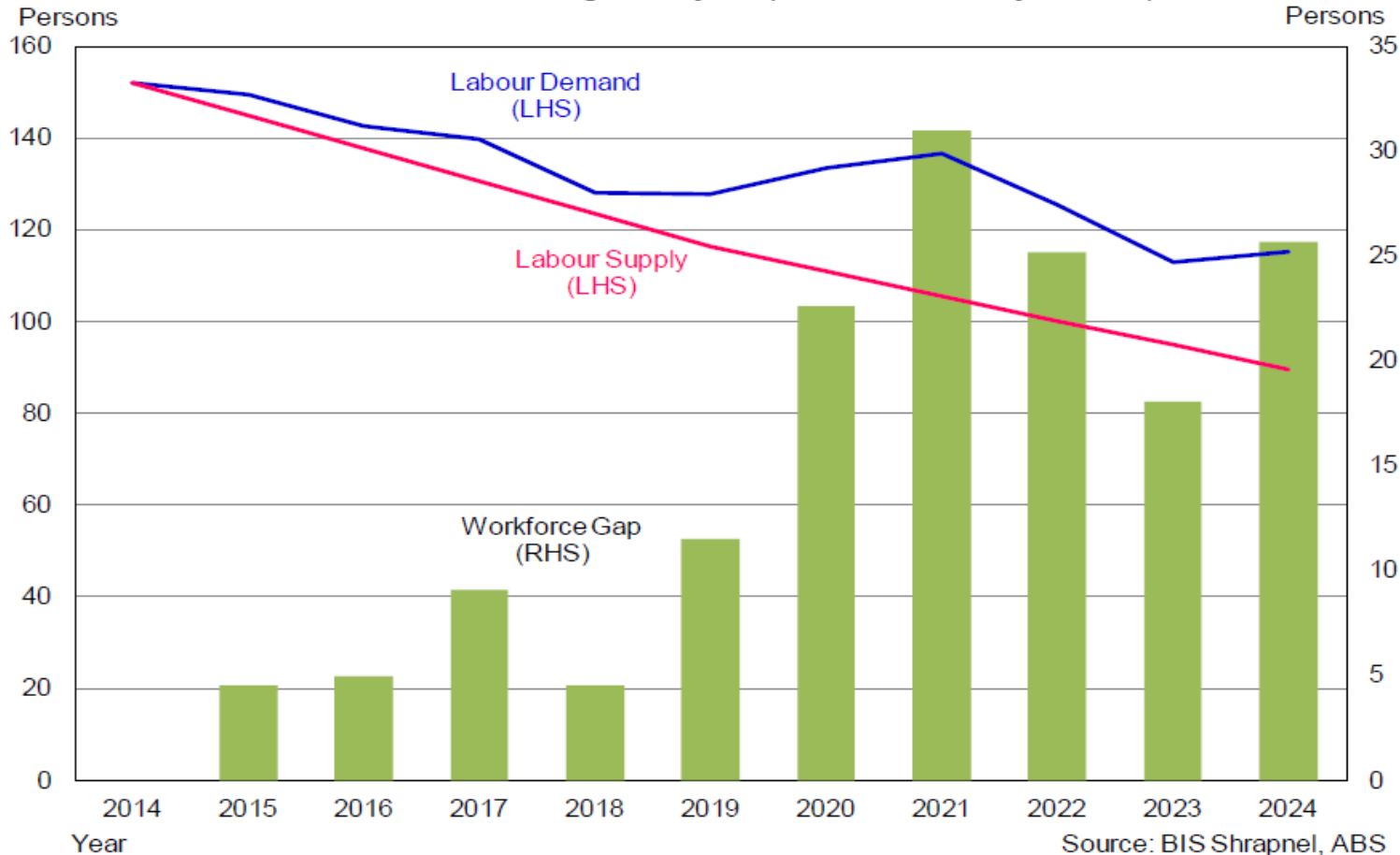




FIG Working Week 2016

CHRISTCHURCH, NEW ZEALAND 2-6 MAY 2016

Recovery

from disaster

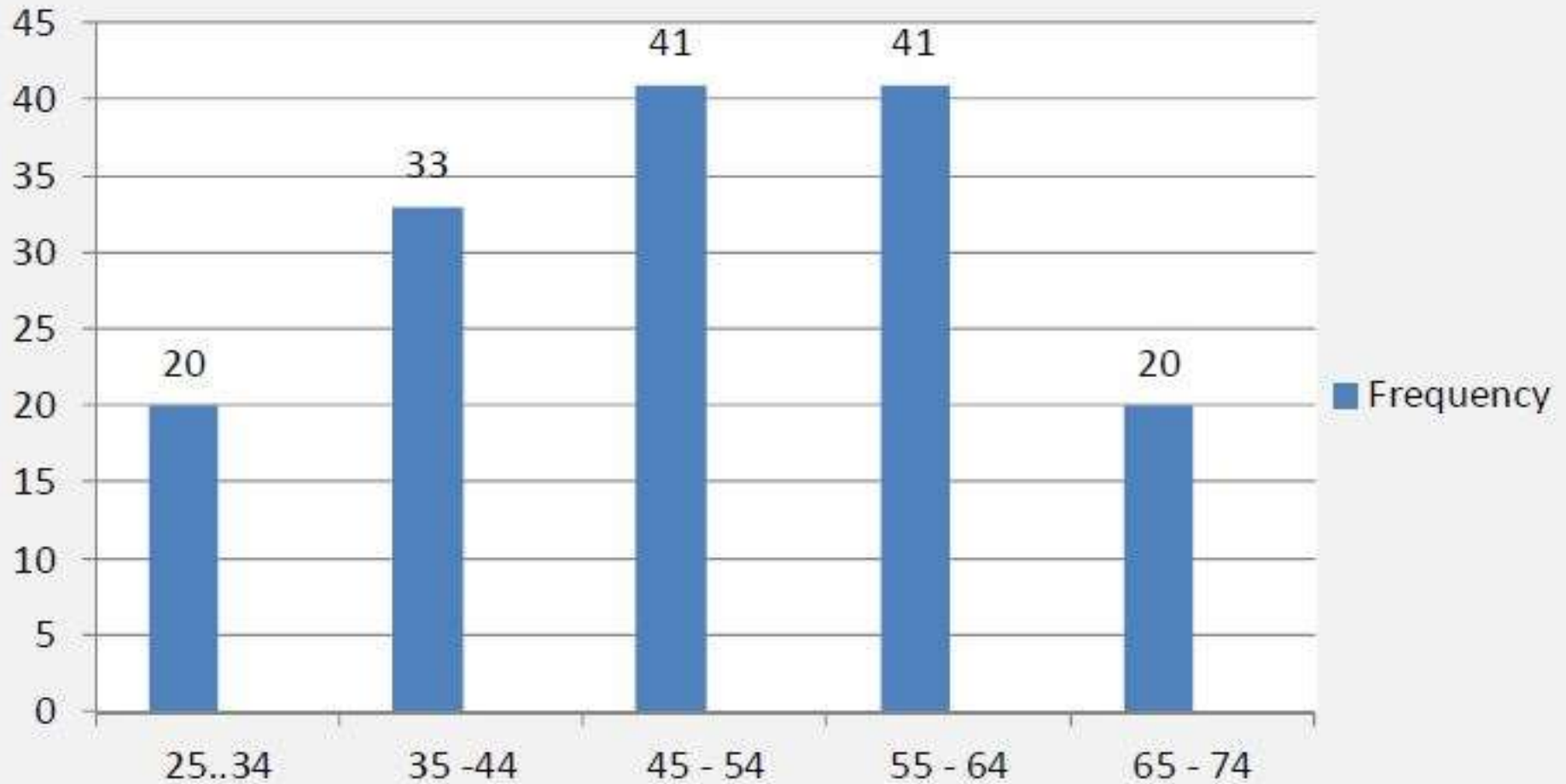




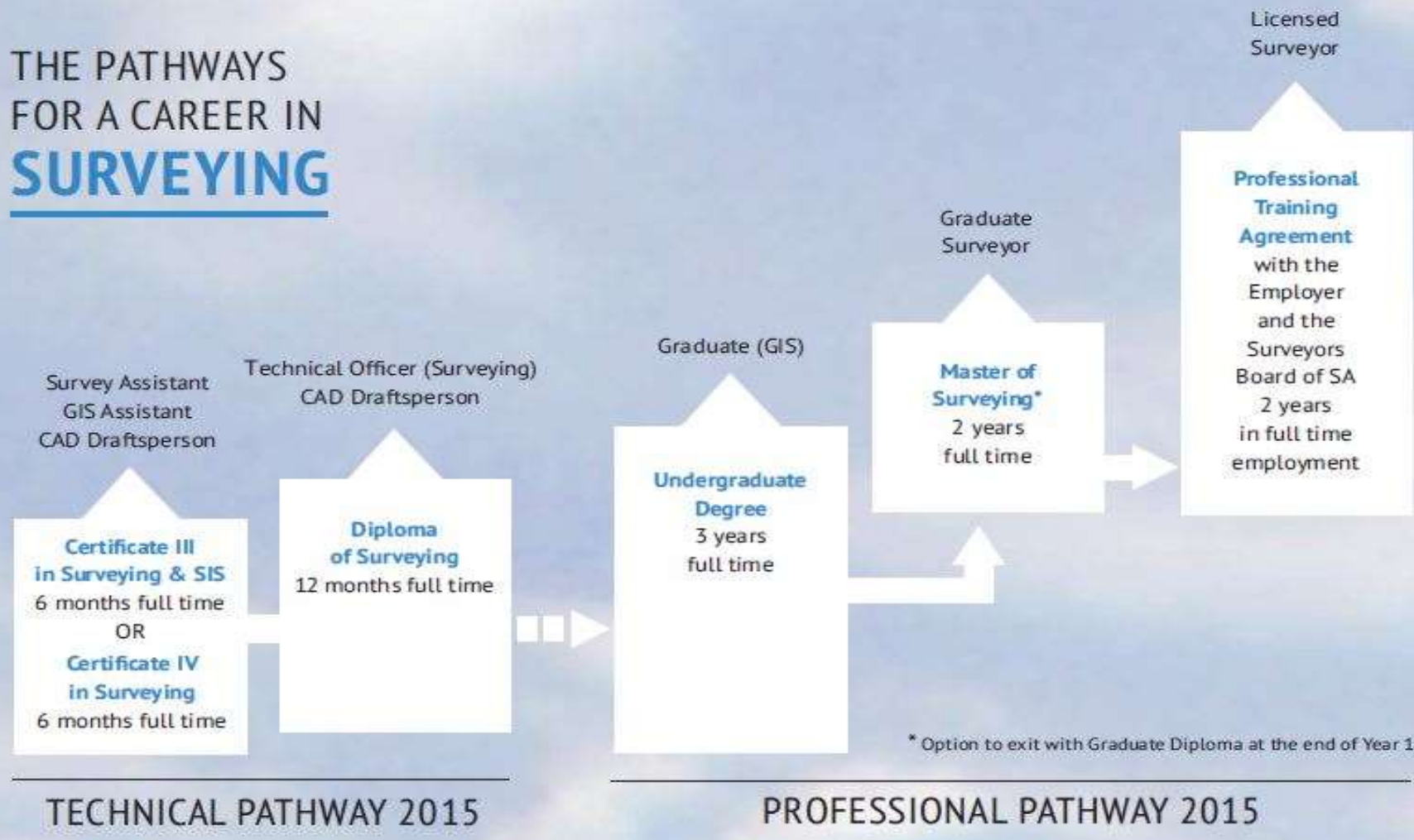
FIG Working Week 2016

CHRISTCHURCH, NEW ZEALAND 2-6 MAY 2016

Recovery

ster

THE PATHWAYS FOR A CAREER IN SURVEYING



Platinum Partners:



Diamond Partner





FIG Working Week 2016

CHRISTCHURCH, NEW ZEALAND 2-6 MAY 2016

Recovery

disaster



Platinum Partners:



Diamond Partner





The Funding Agreement between the Surveyors Board and UniSA identified the following 4 specific objectives:

1. Ensure the presence of a permanent UniSA lecturer with significant expertise in land surveying
2. Hire of sessional staff from the surveying industry to assist with the delivery of the degree
3. Renew and/or purchase surveying equipment
4. Develop promotional material for the marketing of the degree



FIG Working Week 2016

CHRISTCHURCH, NEW ZEALAND 2-6 MAY 2016

Recovery

from disaster



SURVEYING and
MAPPINGSA
careers for the future



Platinum Partners:



Diamond Partner





FIG Working Week 2016

CHRISTCHURCH, NEW ZEALAND 2-6 MAY 2016

Recovery



SURVEYING and
MAPPINGSA

careers for the future



Platinum Partners:



Diamond Partner





Proposed research :

- Comparison of existing surveying university degree programs
- holistic review of the registration/licensing assessment process and timeframes to become a licensed surveyor