

*Presented at the FIG Working Week 2016,
May 2-6, 2016 in Christchurch, New Zealand*

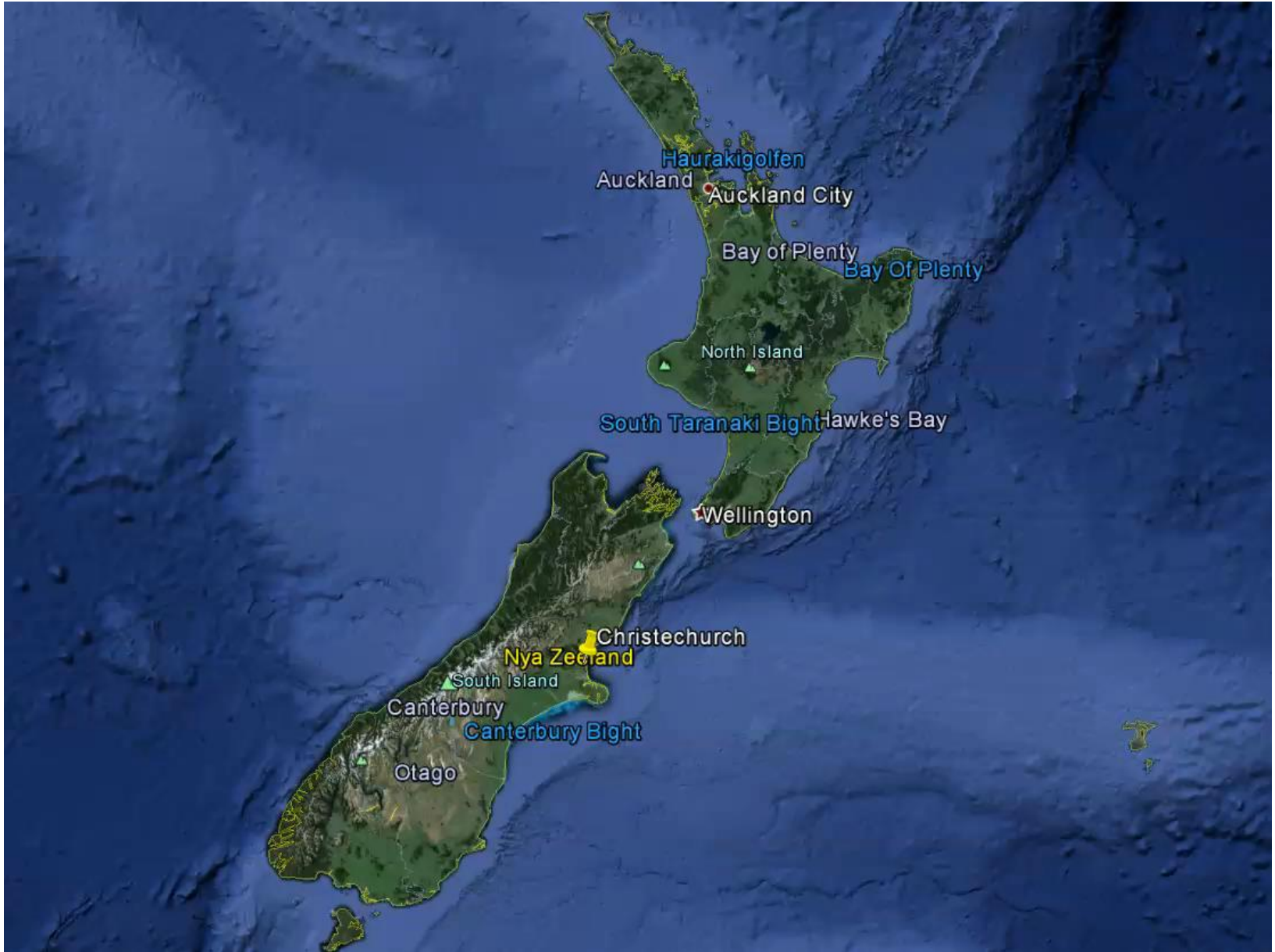
The Production and Use of a Hydrographic Flow-Direction Network of Surface Waters

Lantmäteriet **SMHI**
Rickard Hallengren Håkan Olsson
Erik Sisell

SMHI

LANTMÄTERIET

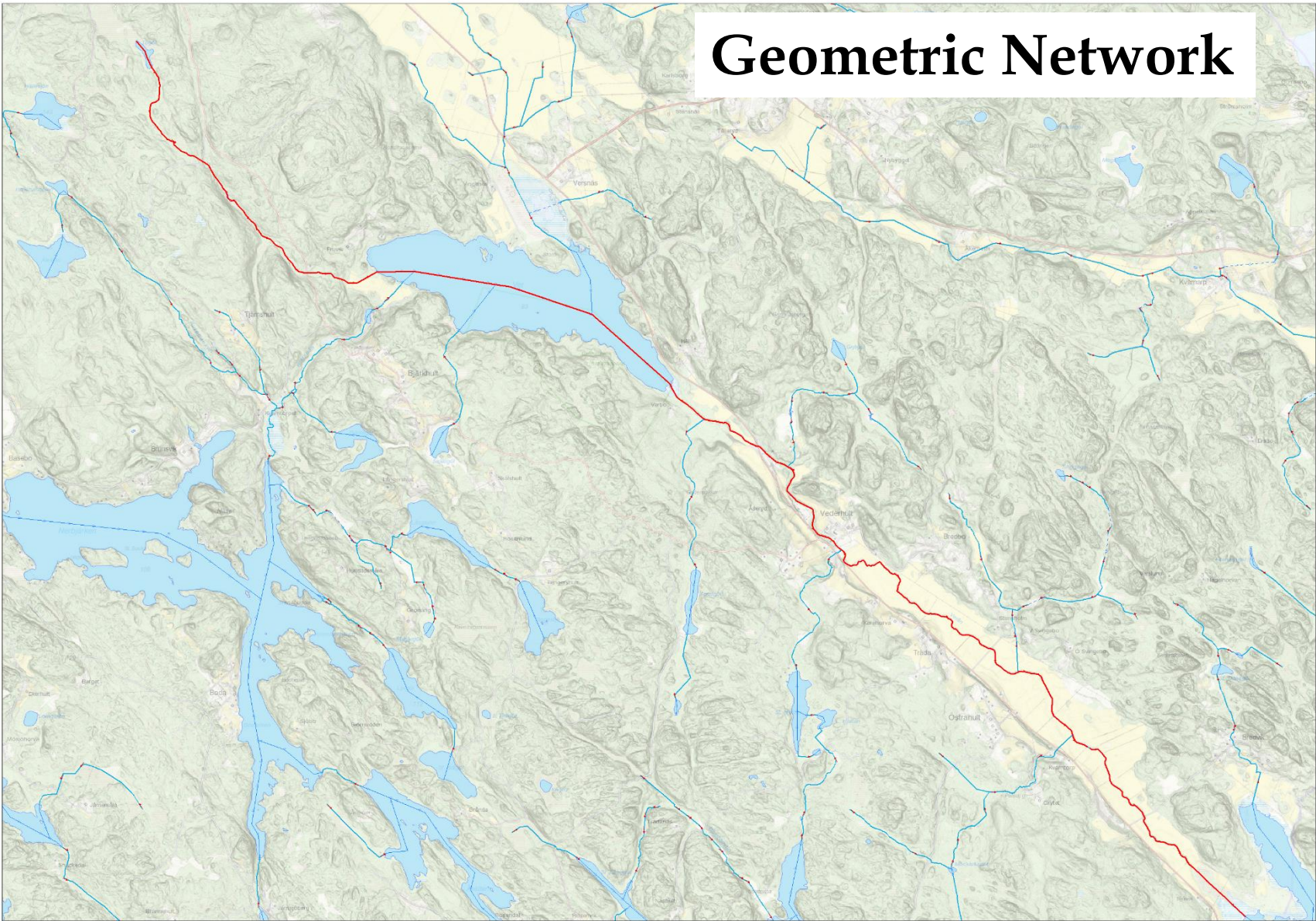




Improving the Basic Hydrographical Data in Sweden



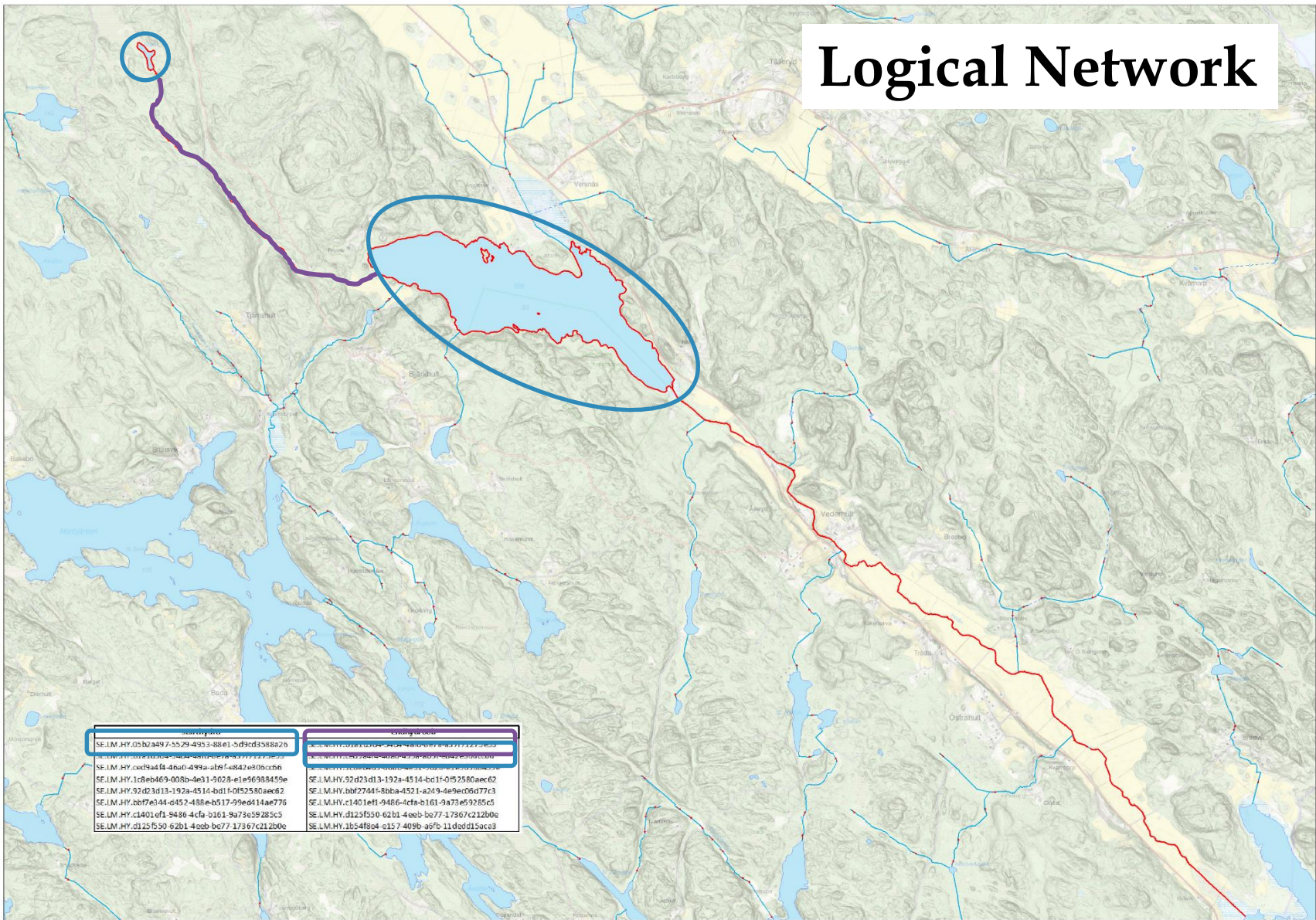
Geometric Network



Logical Network



Logical Network



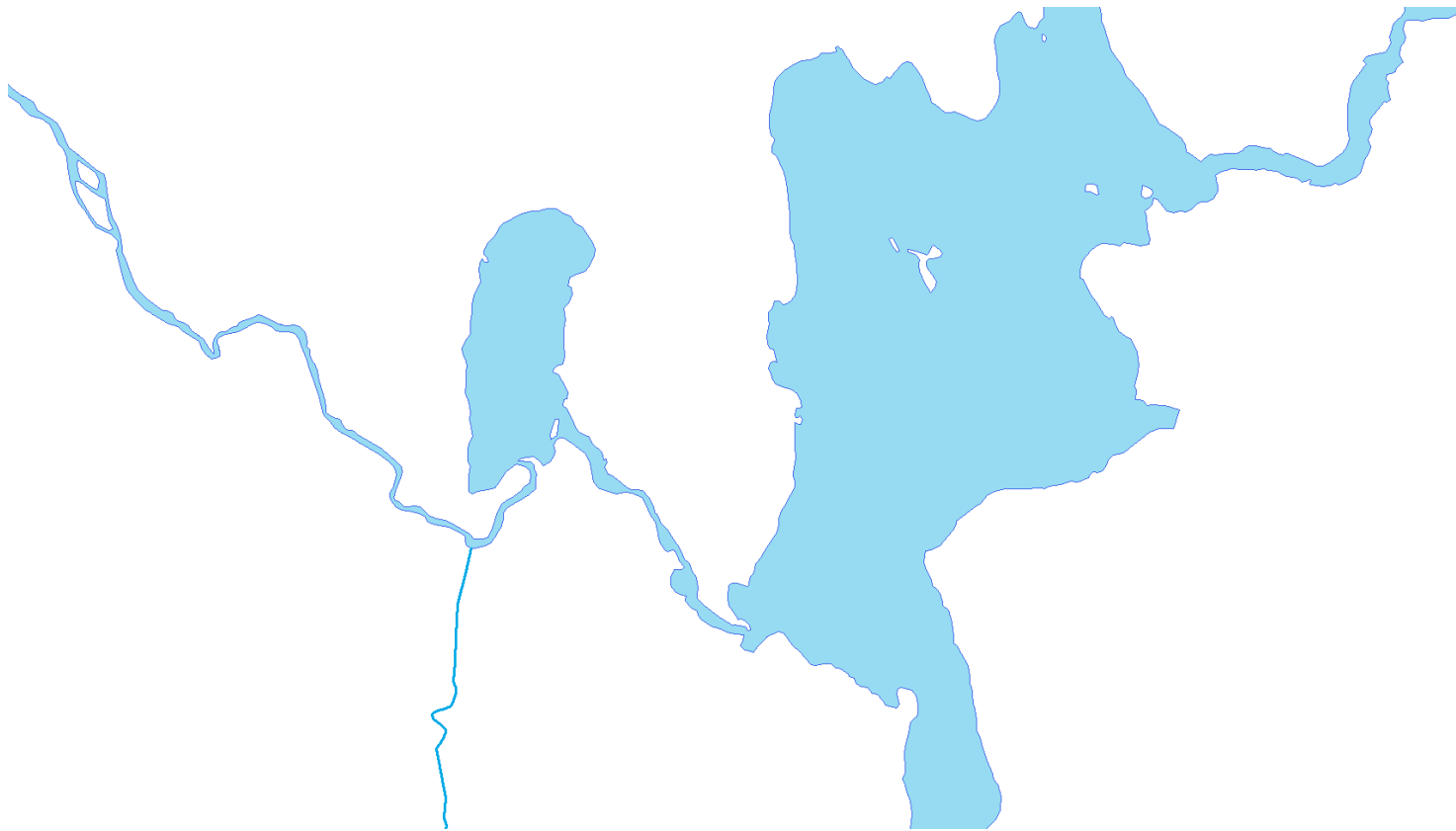
svartvatten	orangevatten
SE.LM.HY.05b2497-5529-453-88e1-5d9cd3588a26	SE.LM.HY.05b2497-5529-453-88e1-5d9cd3588a26
SE.LM.HY.05b2497-5529-453-88e1-5d9cd3588a26	SE.LM.HY.05b2497-5529-453-88e1-5d9cd3588a26
SE.LM.HY.ccd9a4f4-46a0-499a-ab9f-4842e305cc66	SE.LM.HY.ccd9a4f4-46a0-499a-ab9f-4842e305cc66
SE.LM.HY.1c8eb469-008b-4e31-9028-e1e96989459e	SE.LM.HY.1c8eb469-008b-4e31-9028-e1e96989459e
SE.LM.HY.32d23d13-192a-4514-bd1f-0f52580aee62	SE.LM.HY.32d23d13-192a-4514-bd1f-0f52580aee62
SE.LM.HY.bb7e344-d452-488e-b517-99e6d14ae776	SE.LM.HY.bb7e344-d452-488e-b517-99e6d14ae776
SE.LM.HY.c1401ef1-9486-4cfa-b161-9a73e59285c5	SE.LM.HY.c1401ef1-9486-4cfa-b161-9a73e59285c5
SE.LM.HY.d125f50-62b1-4eeb-be77-17367c212b0e	SE.LM.HY.d125f50-62b1-4eeb-be77-17367c212b0e
SE.LM.HY.1b54f864-e157-409b-a6fb-11dad15acc3	SE.LM.HY.1b54f864-e157-409b-a6fb-11dad15acc3



Basic data before "The hydrographic Network Project"



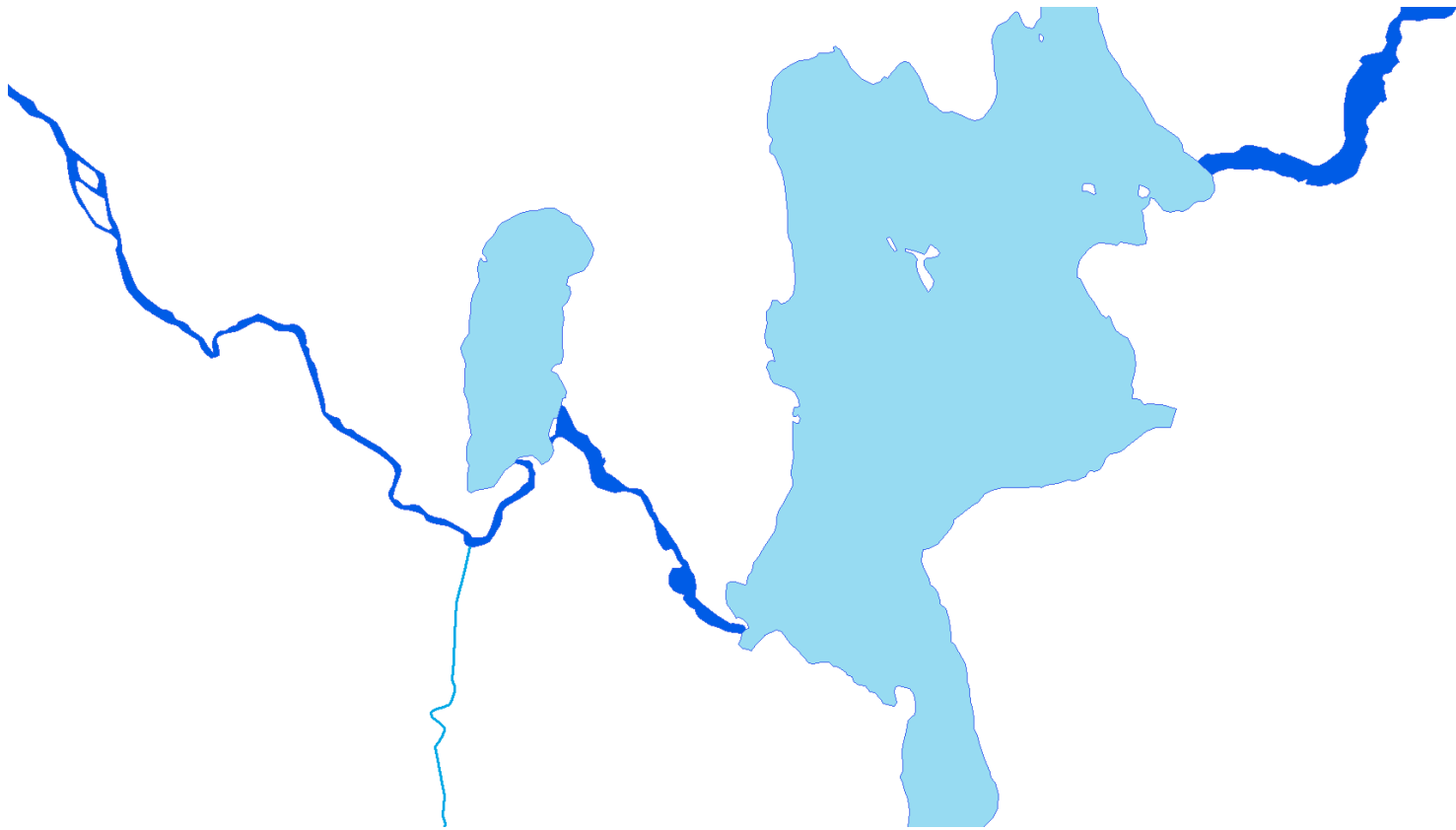
Basic data before "The hydrographic Network Project"



The lakes inlets and outlets are established



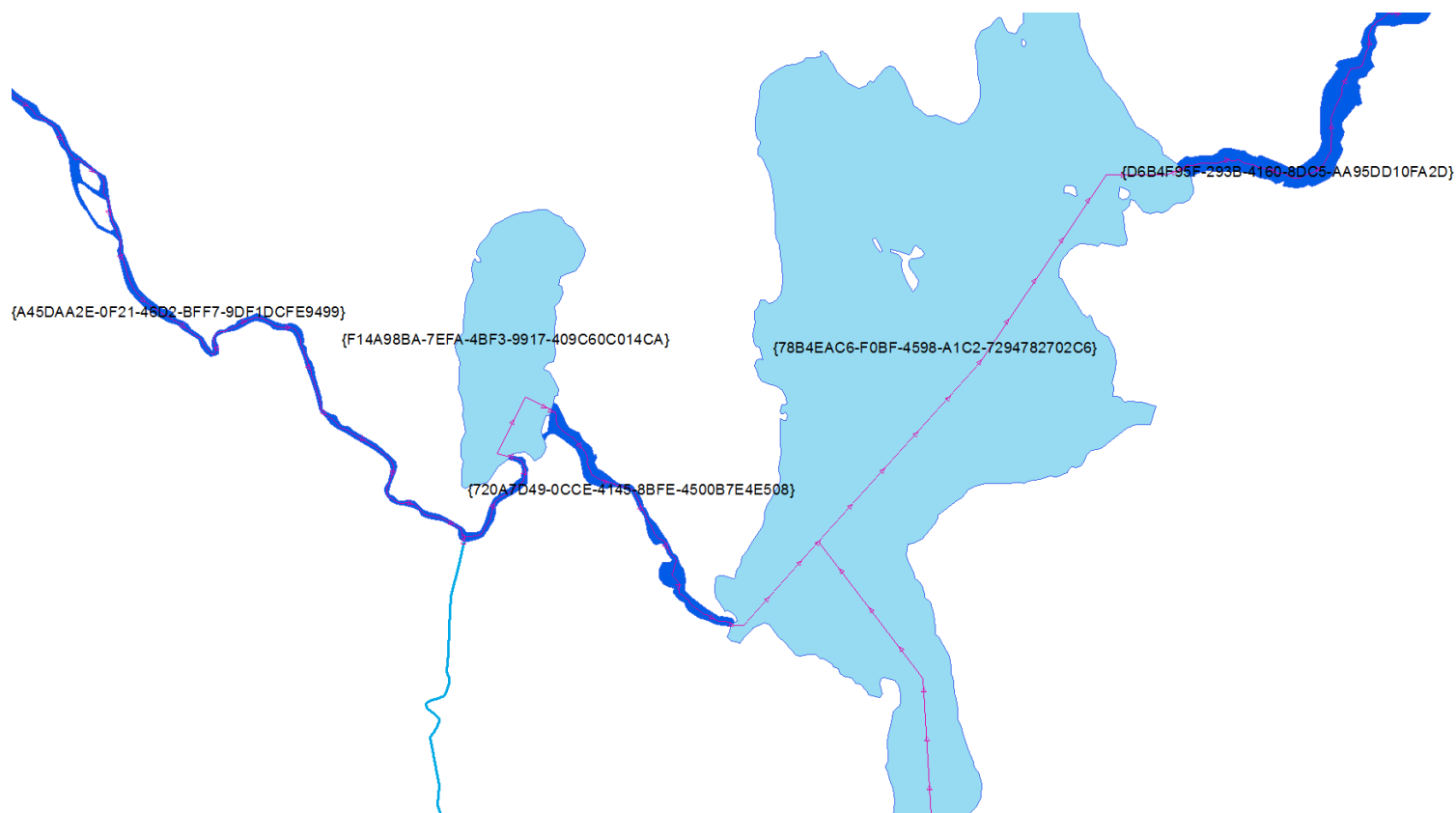
The water areas is objectified



Network links through the water areas are created



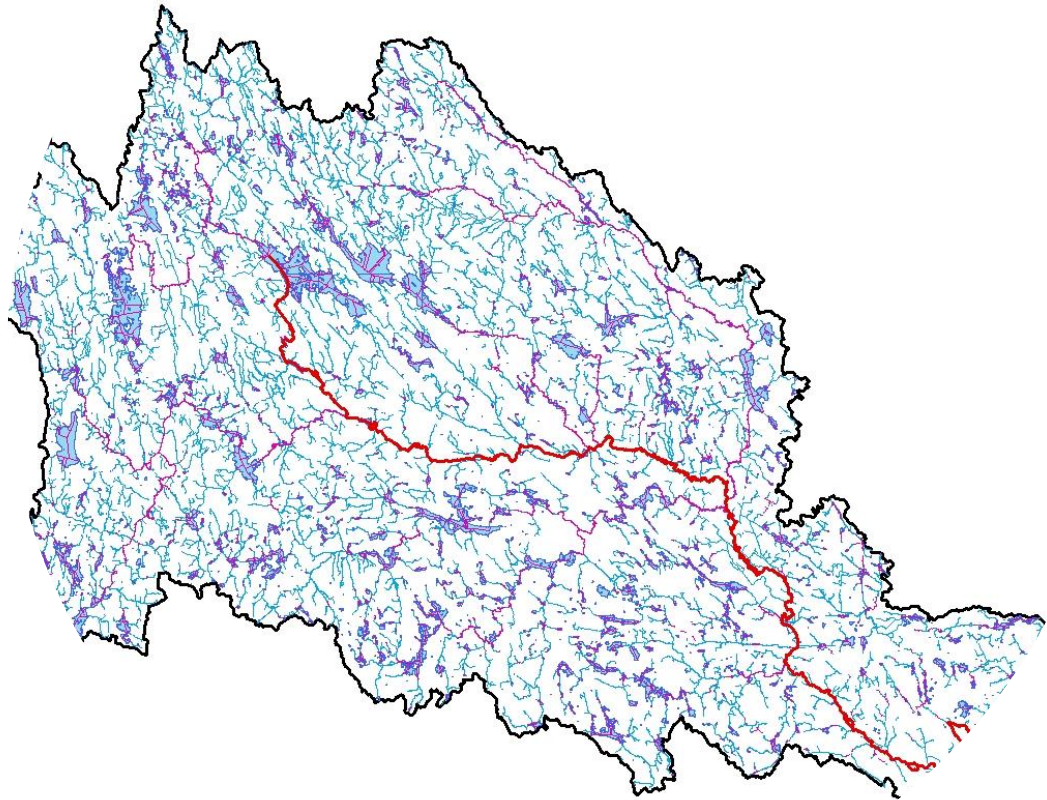
Unique identifier for standing and running water



Unique identifier for water courses

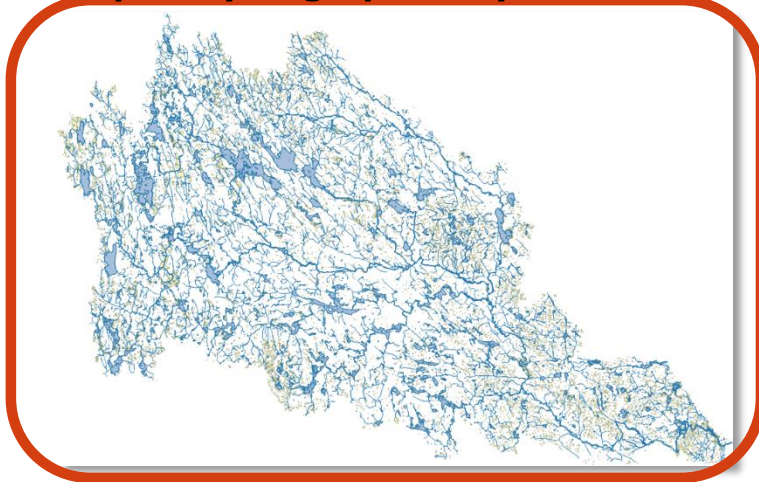


SVARCV SMHI Tillägg till rapporten "Svartån Kv-Bröjct"

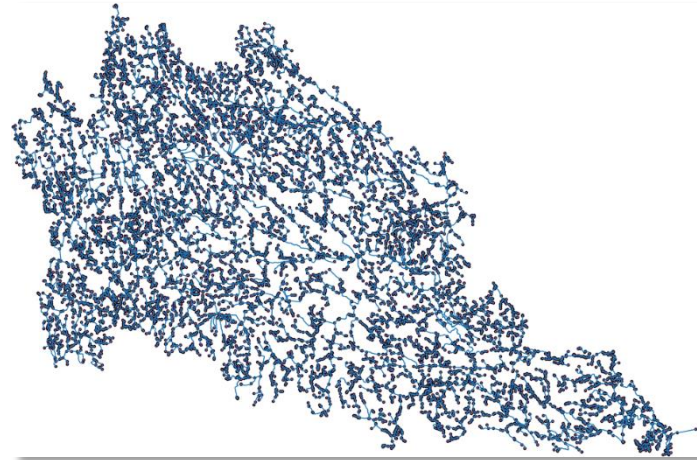


Products

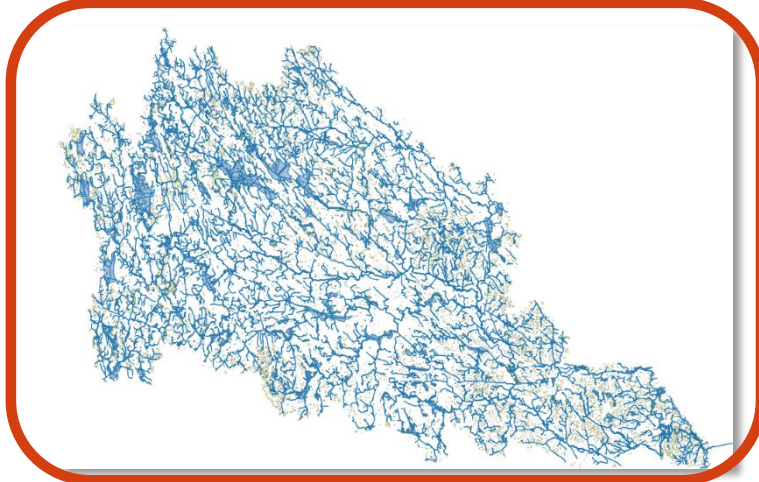
Inspire Hydrographic Physical Waters



Inspire Hydrographic Network




Swedish water standard Physical Waters



Swedish water standard Logical Network

	gml_id	versionID	localId	namespace
0	SE.LM.HY.ac507ba-fdd9-0f59-230f-a88688fcca6a	1	ac507ba-fdd9-0f59-230f-a88688fcca6a	SE.LM.HY
1	SE.LM.HY.c4371a6b-5f76-49c8-60f8-f7f09bc0fa64	1	c4371a6b-5f76-49c8-60f8-f7f09bc0fa64	SE.LM.HY
2	SE.LM.HY.6fd38157-eb1a-04e8-b53c-e3a69a199de9	1	6fd38157-eb1a-04e8-b53c-e3a69a199de9	SE.LM.HY
3	SE.LM.HY.c150a2d0-0fef-c0e8-67ee-bb2db1d28697	1	c150a2d0-0fef-c0e8-67ee-bb2db1d28697	SE.LM.HY
4	SE.LM.HY.28570508-95f3-9e6d-a337-89986e917867	1	28570508-95f3-9e6d-a337-89986e917867	SE.LM.HY
5	SE.LM.HY.25e5f241-df67-e56b-aeaf-4ab20e044bfa	1	25e5f241-df67-e56b-aeaf-4ab20e044bfa	SE.LM.HY
6	SE.LM.HY.6f546324-2ad3-d02f-7fac-a6c9915ea0ae	1	6f546324-2ad3-d02f-7fac-a6c9915ea0ae	SE.LM.HY
7	SE.LM.HY.74ffc1de-b4d2-a1af-9476-12043a80c133	1	74ffc1de-b4d2-a1af-9476-12043a80c133	SE.LM.HY
8	SE.LM.HY.833e3706-ae17-19d8-92ad-aa05777131ef	1	833e3706-ae17-19d8-92ad-aa05777131ef	SE.LM.HY
9	SE.LM.HY.c838358c-3083-0dc6-2b5e-71271b0b13e8	1	c838358c-3083-0dc6-2b5e-71271b0b13e8	SE.LM.HY
10	SE.LM.HY.eabde1b1-f0b1-6502-a04d-f17f3065608c	1	eabde1b1-f0b1-6502-a04d-f17f3065608c	SE.LM.HY
11	SE.LM.HY.89e5779d-7ac1-58b4-c0b0-c8f5e2fe7943	1	89e5779d-7ac1-58b4-c0b0-c8f5e2fe7943	SE.LM.HY
12	SE.LM.HY.7e648aa3-561e-81c8-953e-f32a743b8d69	1	7e648aa3-561e-81c8-953e-f32a743b8d69	SE.LM.HY
13	SE.LM.HY.d5979fd5-192d-2c67-54b3-2837e4e0990e	1	d5979fd5-192d-2c67-54b3-2837e4e0990e	SE.LM.HY
14	SE.LM.HY.c03a3825-e3da-7346-9e96-f8e96e54642f	1	c03a3825-e3da-7346-9e96-f8e96e54642f	SE.LM.HY
15	SE.LM.HY.6135aac3-5e7c-e518-4a6c-97940af0913a	1	6135aac3-5e7c-e518-4a6c-97940af0913a	SE.LM.HY

Conclusion



Identify

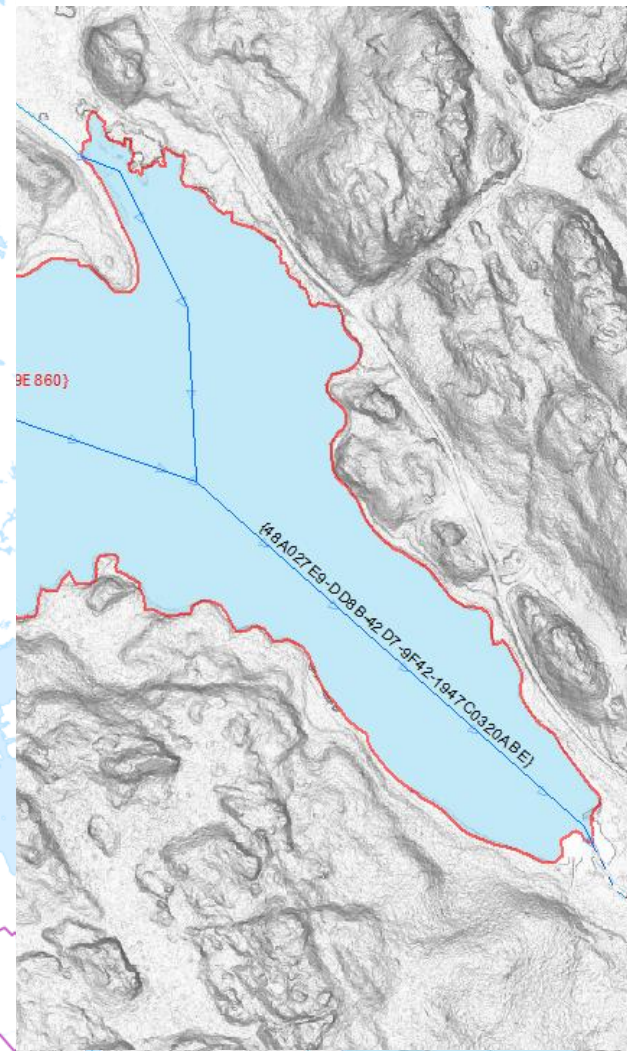
Identify from: <Top-most layer>

MRKMARKTACKKEY
{9B4ECD71-E8C3-4F94-9348-F47157D9E860}

Location: 561 391,608 6 372 328,024 Meters

Field	Value
OBJECTID	247
Shape	Polygon Z
VATTENYTAID	{9B4ECD71-E8C3-4F94-9348-F47157D9E860}
OBJEKTYP	VATTEN
TYP	1509
Funktion	905
Namn	<null>
Ortid	4232784
HAROID	73000
NATIONALITET	SE
SKAPAD	2014-05-22 13:31:41
AANDRAD	2015-09-11 20:44:57
GANDRAD	2014-10-08 08:16:18
SHAPE_Length	8648,583623
SHAPE_Area	1303827,818963

Identified 1 feature



Thank you for listening!

