



# GLTN

GLOBAL LAND TOOL NETWORK

*SECURING LAND AND PROPERTY RIGHTS FOR ALL*

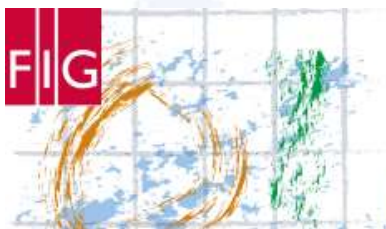
# Land Tools for Tenure Security for All

**PROF. JAAP ZEVENBERGEN**

*UNIVERSITY OF TWENTE - ITC*

1<sup>ST</sup> JUNE 2017

**HELSINKI, FINLAND**



## FIG WORKING WEEK 2017

Surveying the world of tomorrow –  
From digitalisation to augmented reality

May 29 - June 2 **Helsinki Finland**



FACILITATED BY:

**UN HABITAT**  
FOR A BETTER URBAN FUTURE

# GLOBAL LAND CHALLENGES

# 70%



- Only 30 % cadastral coverage (versus 70% tenures off register) – *Need to secure tenure ASAP to all citizens.*
- Only 2-3% ownership by women – *how to increase?*

• Dealing with the affordability issue - *how to modernize systems in a pro-poor way?*

• Complexity of land rights, claims, and records - *how to capture the information in a participatory, affordable and acceptable way?*

FACILITATED BY:

**UN HABITAT**  
FOR A BETTER URBAN FUTURE

# 30%



**GLTN**  
GLOBAL LAND TOOL NETWORK

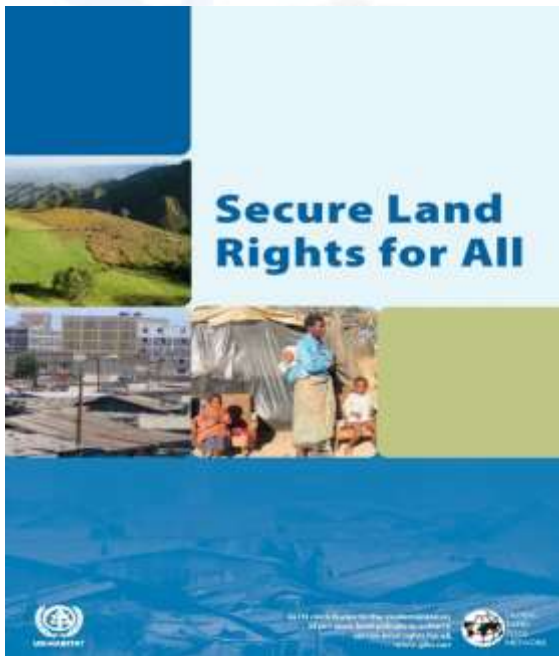
# OTHER CHALLENGES WITH LAND DIMENSION

- Climate change & natural disasters
- Rapid urbanization
- Resource conflicts
  - Increased demand for land
- Food, water and energy insecurity



# THE KEY CHALLENGE

How to support **various tenure types & systems at scale** to enable land reform and secure land and property rights for all?



FACILITATED BY:

**UN HABITAT**  
FOR A BETTER URBAN FUTURE

 **GLTN**  
GLOBAL LAND TOOL NETWORK

# GLTN OVERVIEW

The Global Land Tool Network (GLTN) is an Alliance of over 75 Global, Regional and National Partners contributing to poverty alleviation through land reform, improved land management and security of tenure

- **GLTN Conceived in early 2004 to:**
- Develop and disseminate **pro-poor and gender sensitive Land Tools** at global scale to implement pro-poor land policies and land reform
- **GLTN works with partners** to assist Member States in implementing land policies that are pro-poor, gender sensitive and at scale
- GLTN Partners include: Bilateral Organizations, International Professional Bodies, International Training/ Research Institutions, Multilateral organizations, Rural & Urban Int. CSO

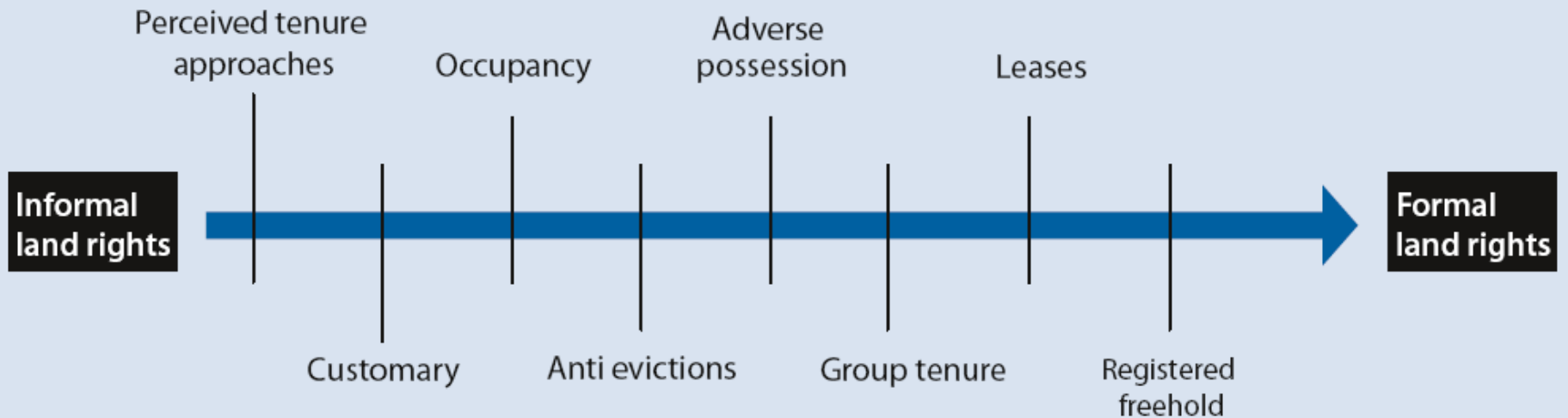
FACILITATED BY:

**UN HABITAT**  
FOR A BETTER URBAN FUTURE



# CONTINUUM OF LAND RIGHTS

## Paradigm Shift



FACILITATED BY:

**UN HABITAT**  
FOR A BETTER URBAN FUTURE

 **GLTN**  
GLOBAL LAND TOOL NETWORK

# LAND TOOLS

## 1. ACCESS TO LAND & TENURE SECURITY

- 1a. Enumerations for tenure security
- 1b. Continuum of land rights
- 1c. Deeds or titles
- 1d. Socially appropriate adjudication (STDM)
- 1e. Statutory and customary
- 1f. Co-management approaches
- 1g. Land record management for transactability
- 1h. Family and group rights

## 2. LAND MANAGEMENT & PLANNING

- 2a. Citywide slum upgrading
- 2b. Citywide spatial planning
- 2c. Regional land use planning
- 2d. Land readjustment (slum upgrading and/or post crisis; PILaR)

## 3. LAND ADMINISTRATION & INFORMATIONS

- 3a. Spatial units
- 3b. Modernizing of land agencies budget approach

## 4. LAND-BASED FINANCING

- 4a. Land tax for financial and land management

## 5. LAND POLICY AND LEGISLATION

- 5a. Regulatory framework for private sector
- 5b. Legal allocation of the assets of a deceased person (Estates administration, HIV/AIDS areas)
- 5c. Expropriation, eviction and compensation

### CROSS CUTTING ISSUES (8), incl:

Gender

Land Governance

Youth,....

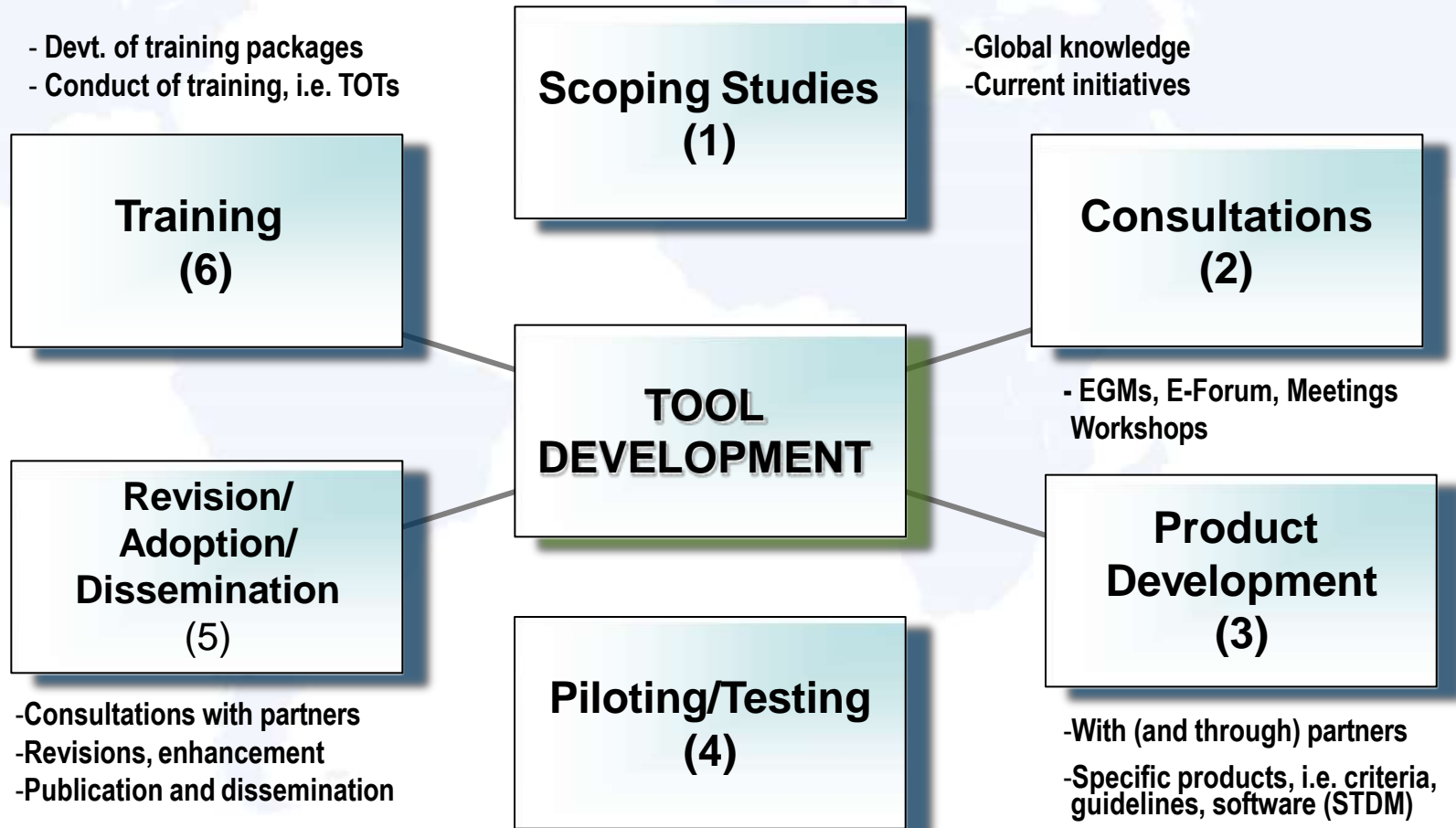
*A **Land Tool** is a practical method to achieve a defined objective in a particular context. It can be a guide, criteria, software, training package, manual, guidelines, frameworks, etc.*

FACILITATED BY:

**UN HABITAT**  
FOR A BETTER URBAN FUTURE

 **GLTN**  
GLOBAL LAND TOOL NETWORK

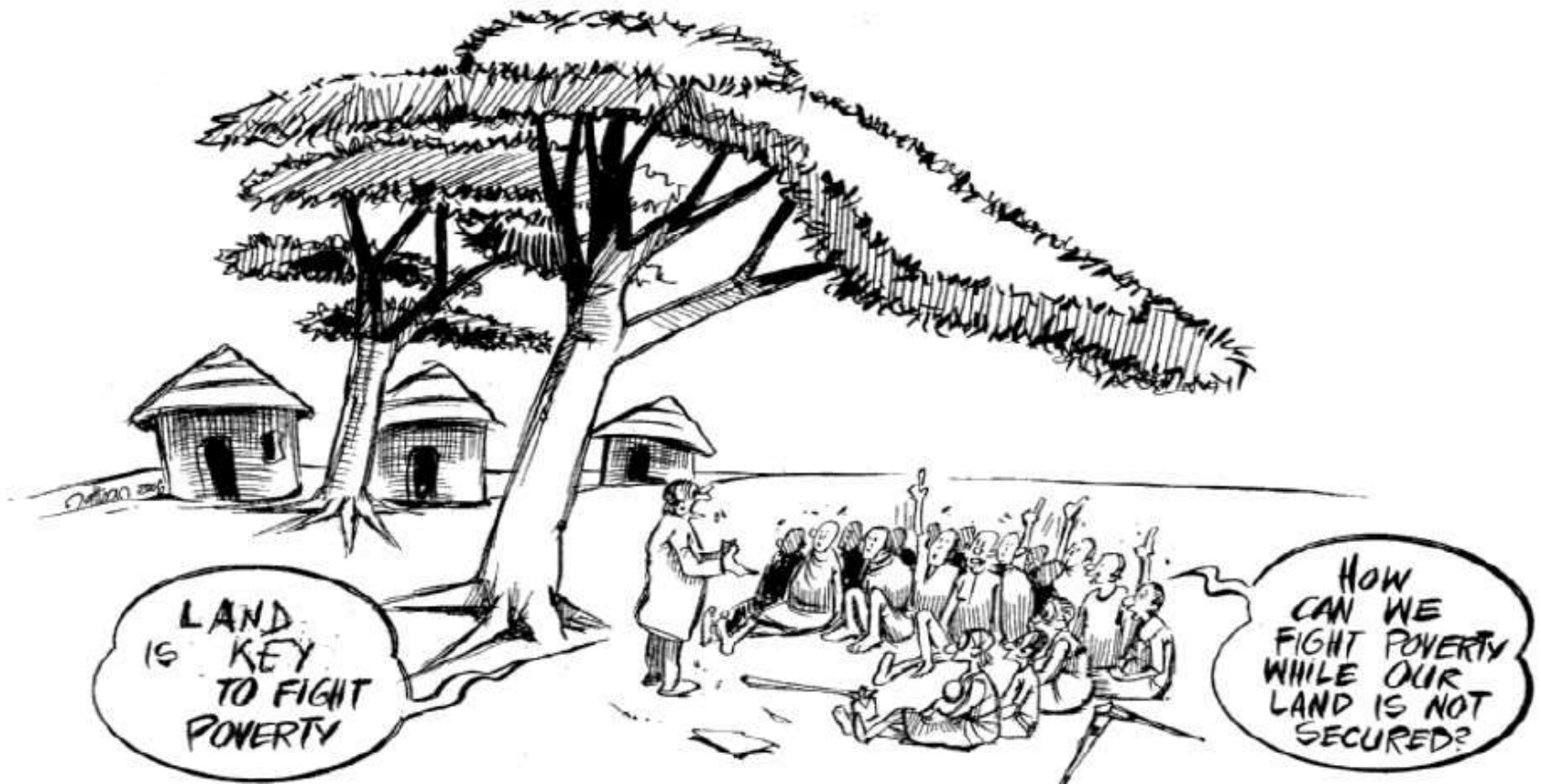
# TYPICAL LAND TOOL DEVELOPMENT PROCESS



FACILITATED BY:

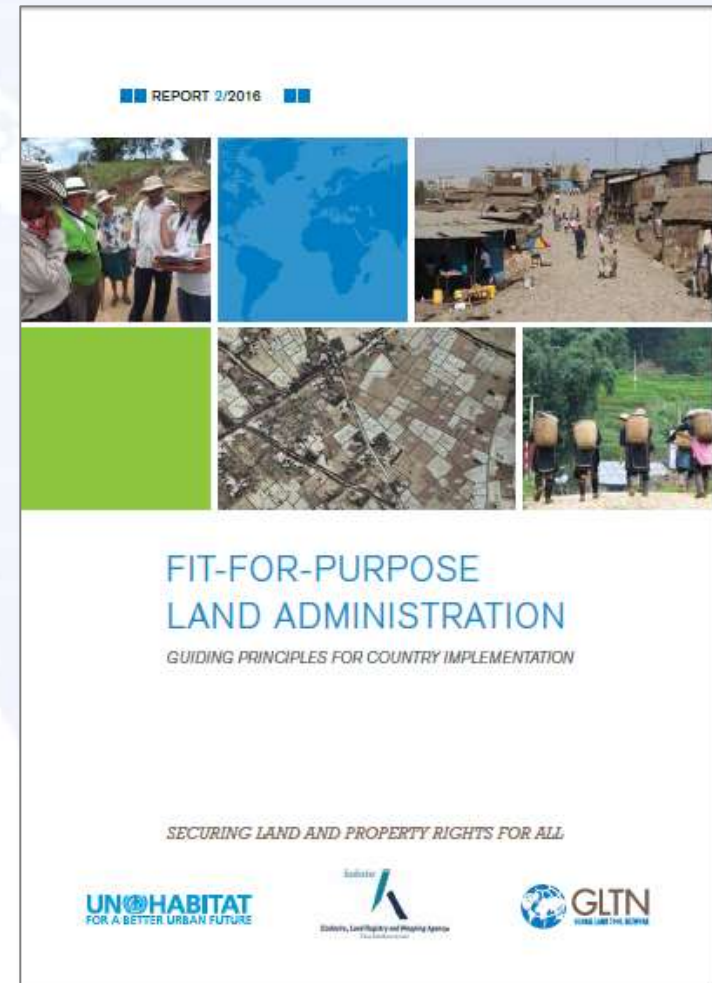


# Select Land Tools for Tenure Security



# FIT-FOR-PURPOSE: WHAT IS IT?

- **Fit-For-Purpose** - The systems should be designed for serving the basic purposes such as including all land; provide secure tenure for all; and control of the use of land.
- **Flexibility** - Scale and accuracy relate to geography, density of development, and budgetary capacity; the legal and institutional framework should be designed to accommodate both legal and social tenure rights.
- **Incremental Improvement** - Advanced Western-style concepts may well be seen as the end target –but not as the point of entry.



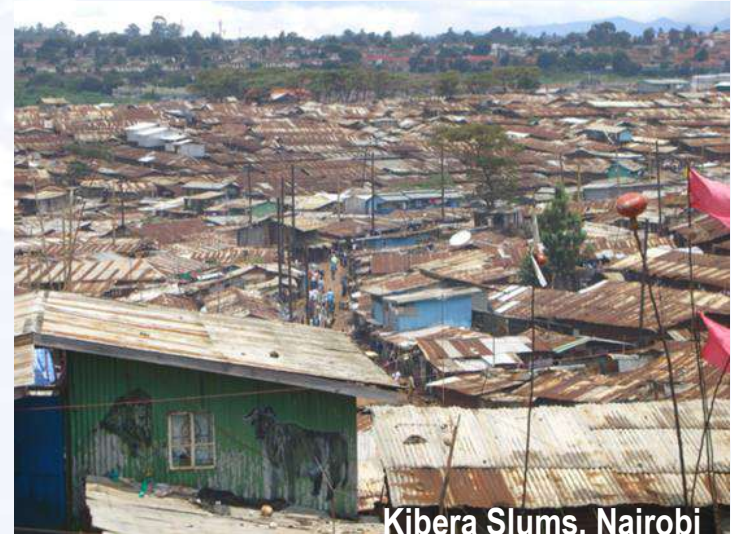
FACILITATED BY:

**UN-HABITAT**  
FOR A BETTER URBAN FUTURE

 **GLTN**  
GLOBAL LAND TOOL NETWORK

# FIT-FOR-PURPOSE: WHY?

- **Cadastral gap**
  - Only about 40 countries in the world have well functioning land administration systems.
  - In most developing countries less than 10 per cent of the land is included in formal systems.
- **Limitations** – Western-style systems are too costly and too time consuming and capacity demanding –and they do not serve the millions of people whose tenure are predominantly social rather than legal.
- **Benefits**- A Fit-For-Purpose approach will ensure that basic and appropriate land administration systems are built within a relatively short time frame and at affordable costs.

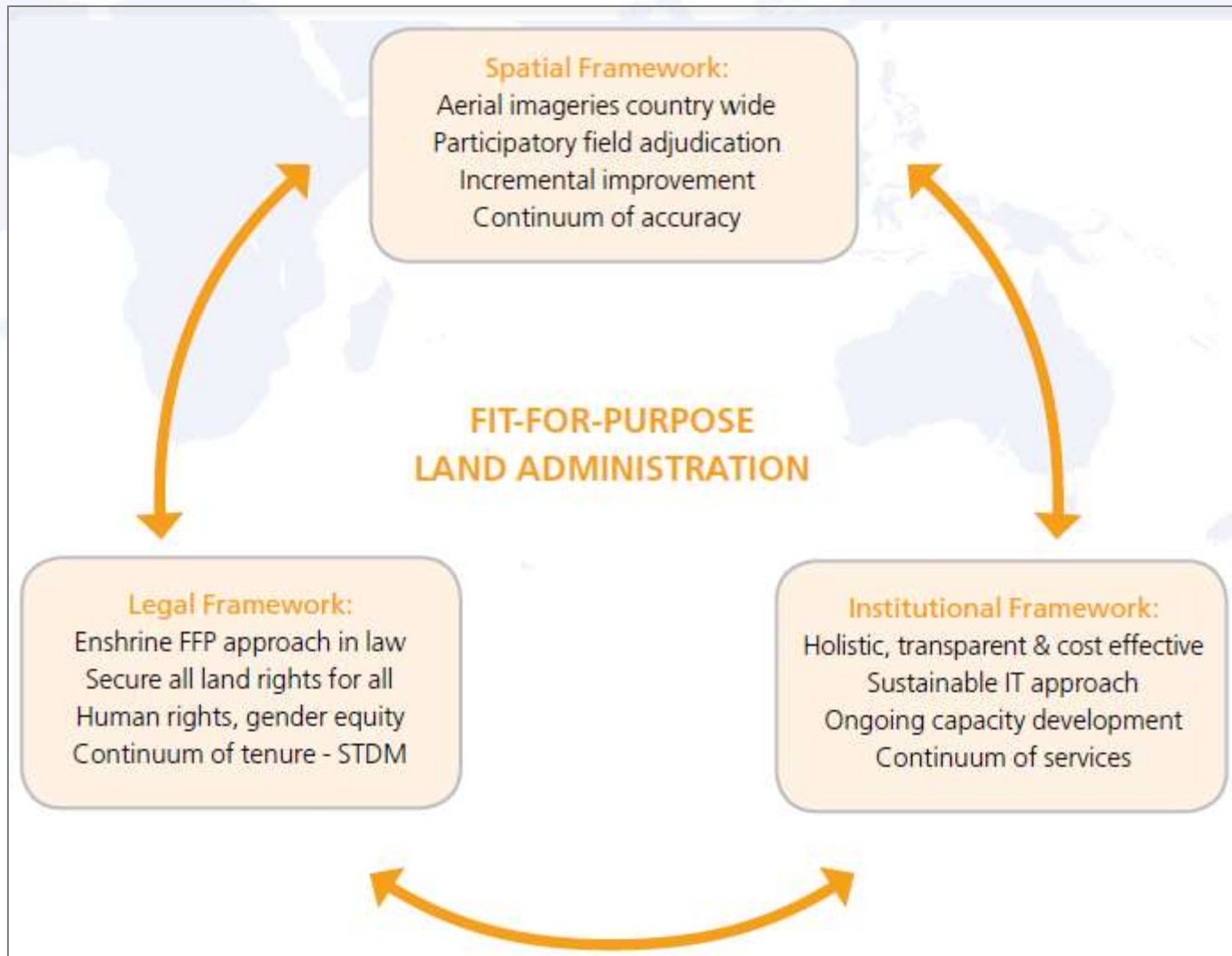


FACILITATED BY:

**UN HABITAT**  
FOR A BETTER URBAN FUTURE

 **GLTN**  
GLOBAL LAND TOOL NETWORK

# FIT-FOR-PURPOSE: CONCEPT



FACILITATED BY:

# GENDERING LAND TOOL DEVELOPMENT



# GENDER ISSUES IN LAND

- To remind ourselves, **gender refers to socially constructed or culturally ascribed characteristics, roles and capabilities of women and men.**
- Women's ownership of land varies from region to region, but is estimated to be **less than 2% worldwide**
- Providing equal property **rights for women as compared to men is first, and foremost, a right in itself.**
- It is important to **be aware of gender stereotypes** which often occur around land, and their implications for land access and tenure security.

FACILITATED BY:

**UN HABITAT**  
FOR A BETTER URBAN FUTURE



# GENDER EVALUATION CRITERIA (GEC)

- A set of questions against which the extent of gender responsiveness of a given land policy or intervention can be assessed
- Three key-steps: data collection, consolidation and validation
- Score-card methodology for validation of the results and making the results more accessible


**Gender evaluation criteria for large-scale land tools**

How can we judge if a land tool is responsive to both women and men's needs?

Despite progress on women's rights, rights to land and access to land tenure are not enjoyed equally by women and men in many parts of the world. This goes against international human rights, and also impacts negatively on food security and the economy.

Gender issues related to land are complicated. They tend to combine a local and cultural context and challenge deeply rooted power structures. At the same time, we know that for a land tool to be effective, it needs to go beyond a technical lens and also consider social dimensions such as gender.

The Global Land Tool Network works to disseminate and build on a set of existing tools, or evaluating existing land tools from a gender perspective represented in this brochure. The gender tool suite is a tool because it explains how to judge whether a large-scale land tool is sufficiently gender-responsive to identify any areas that need to be done, and provides a starting point to make a tool equally beneficial to women and men.



**LIVINHABITAT**  
THE GLOBAL LAND TOOL NETWORK

**UCL**  
UNIVERSITY COLLEGE LONDON

**FIG**  
FEDERAL INSTITUTE FOR GEOMATIC ENGINEERING

**GLOBAL LAND TOOL NETWORK**

**FIG**

IMAGE COURTESY: GUY CARRETT FOR THE GLOBE

**♀'s SECURITY OF TENURE**

ACCESS	USE	CONTROL
<ul style="list-style-type: none"> <li>WOMEN'S LAND LINKS AFRICA</li> <li>LEGAL AWARENESS</li> <li>COMMUNITY THEMAS</li> <li>PARTNERSHIPS (L2L)</li> <li>VIOLENCE</li> </ul>	<ul style="list-style-type: none"> <li>RESILIENCE</li> <li>EXCHANGES IN DEVELOPMENT</li> </ul>	<ul style="list-style-type: none"> <li>BENEFIT FROM ITS PRODUCTION</li> <li>NEED <b>RECOGNITION</b> FOR <b>COMMUNITY RIGHTS</b></li> <li>PROTECTION FROM LAND GRABS / POWER SHIFTS</li> </ul>

# GENDER EVALUATION CRITERIA TOOL

- **2009/10:** Grassroots Pilot Testing GEC in Brazil, Ghana and Nepal
- **2013** Roll-out by key GLTN Partners and UN-Habitat Regional Programmes in The Caribbean and Asia-Pacific (**40 Countries in Total**)
- **2014** – Synthesis Lessons Learned, Monitoring + Reporting



FACILITATED BY:

**UN HABITAT**  
FOR A BETTER URBAN FUTURE



# TRAINING TOOLS

TRAINING PACKAGE: TOOLKIT



TOOLS TO SUPPORT TRANSPARENCY  
IN LAND ADMINISTRATION

SECURING LAND AND PROPERTY RIGHTS FOR ALL

UN HABITAT  
FOR A BETTER URBAN FUTURE



## Trainers' Guide – Tools to Support Transparency in Land Administration

FACILITATED BY:

UN HABITAT  
FOR A BETTER URBAN FUTURE

## Training Package – Tools to Support Transparency in Land Administration

TRAINING PACKAGE: TRAINERS' GUIDE



TOOLS TO SUPPORT TRANSPARENCY  
IN LAND ADMINISTRATION

SECURING LAND AND PROPERTY RIGHTS FOR ALL

UN HABITAT  
FOR A BETTER URBAN FUTURE



# GOING FORWARD

- Demand-driven support:
  - Country level implementation
  - Learning exchanges with other countries
  - Donor and technical partners coordination mechanism
- Support to regional land policy initiatives



# THANK YOU

## Questions?

GLTN Secretariat  
UN-Habitat, P.O Box 30030, Nairobi 00100, Kenya

[glt@unhabitat.org](mailto:glt@unhabitat.org)  
[www.glt.net](http://www.glt.net)

*SECURING LAND AND PROPERTY RIGHTS FOR ALL*

FACILITATED BY:

**UN HABITAT**  
FOR A BETTER URBAN FUTURE

