

Addressing the Land Information Requirements of the Urban Poor - *Piloting STDM in Uganda*

By:
(Mbale Slum Dweller Federation)



Outline of Presentation

- **Background and objectives**
- **Enumeration Process**
- **Initial Results**
- **Achievements, Lessons and Next Steps**



Long Term Objectives

1. To pioneer a tool that will begin to address land information management requirements in hitherto neglected areas
2. To build capacity in the use and application of land information systems based on free and open source software packages

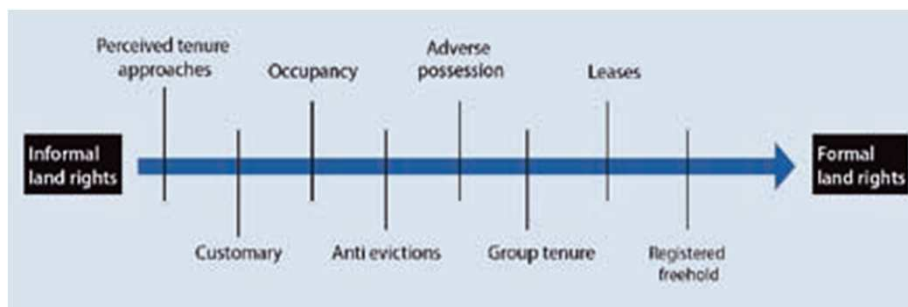


Immediate Objectives

1. To pilot the Social Tenure Domain Model (STDM) and document the process
2. Identify capacity development requirements around its use for wider learning and application



The Continuum of Land Rights



Who are involved in the pilot?

Implemented by:

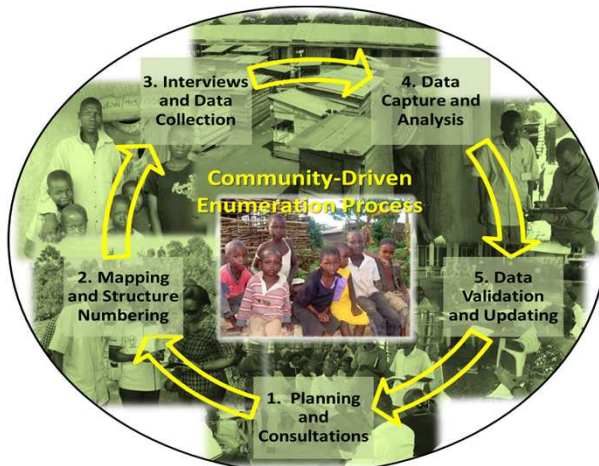
- Ministry of Land, Housing and Urban Development
- Municipality of Mbale
- Slum Dwellers International
- UN-Habitat/GLTN
- Actogether (NGO)
- Slum Federation (national and local)
- Community Leaders and Members

Supported by:

- Cities Alliance
- FIG Foundation (including Trimble)
- Co-financed by UN-Habitat/GLTN and SDI



The Enumeration Process



Planning and Consultations

- Planning with stakeholders
- Community awareness, sensitization and mobilization



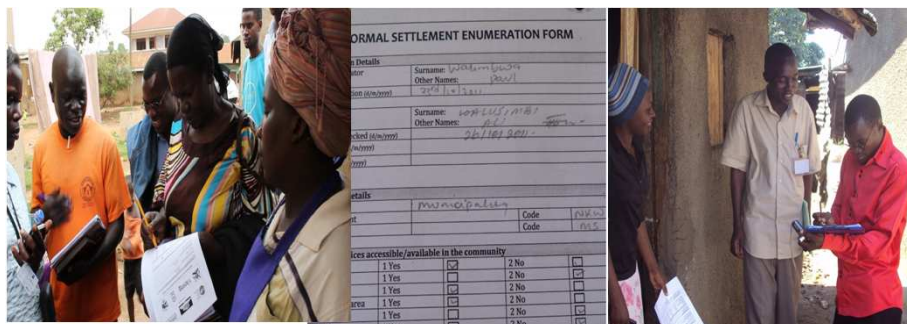
Mapping and Structure Numbering

- Produce initial maps using satellite imagery or Google Map
- Using the initial map, enumerators number all structures with a unique code
- Map community facilities (e.g. water points, etc.)



Interviews and Data Collection

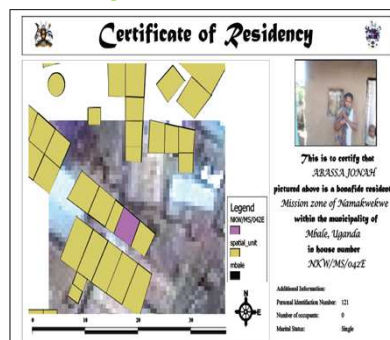
- Enumeration Teams, usually accompanied by local leaders and municipal officials or elders, conduct house to house interviews and filling the agreed questionnaire.
- Enumerators also collect supporting documents and take photos
- Update initial maps (e.g. new structures)



Data Capture and Analysis

This stage involves:

- Data entry
- Updating of digital map
- Integrate data on STDM system
- Undertake analysis
- Produce reports and print-outs (as necessary)
- Data exporting from STDM



Secondary data capture

Supporting Documents

Documents and others evidence collected in the slums as proof to claims

- Receipts;
- IDs;
- Marriage certificate;
- Family photos
- Rent agreements;
- Voters ID.
- Audios or speech
- Video clips



Data Validation and Updating

- Collected data are displayed and validated by community members; Update the STDM data as appropriate
- Continuous updating and maintenance by community members



Initial Results-Household information in STDM

STDM Version 0.9.13 - MKEPP Pilot Project

Household Details		Household Supporting Documents	
Household Number	NKW/MS/400A	Total Household	0
Household Number	NKW/MS/400A	Assigned Char	A
Household Persons		Persons Below 18 Yrs	
Persons Above 18 Yrs		Male	0
Male	1	Female	1
Female	1	Total Persons	3
Household Tenure status	Tenant		
Monthly Household income	100,000 - 200,000		
Rent Per month			
	<input type="checkbox"/> Has Contract/Agreement		
Daily Transport cost			
Daily Expenditure			
Settlement Period	1-5 years		
Previous Residence	In rural area		
Reason for settling here	Affordable rent		
Financial savings	Not saving		
<input type="checkbox"/> Any Disability in the Household	Number: 0		

Household Details

Person/ Occupant

Tenure Relationship



Priority Community Projects

Bufumbo

Project	Numbers
Electricity	38
Garbage Disposal	20
Water	17
Road and Drainage	17

Mission

Project	Numbers
Electricity	217
Water	112
Health Centre	108

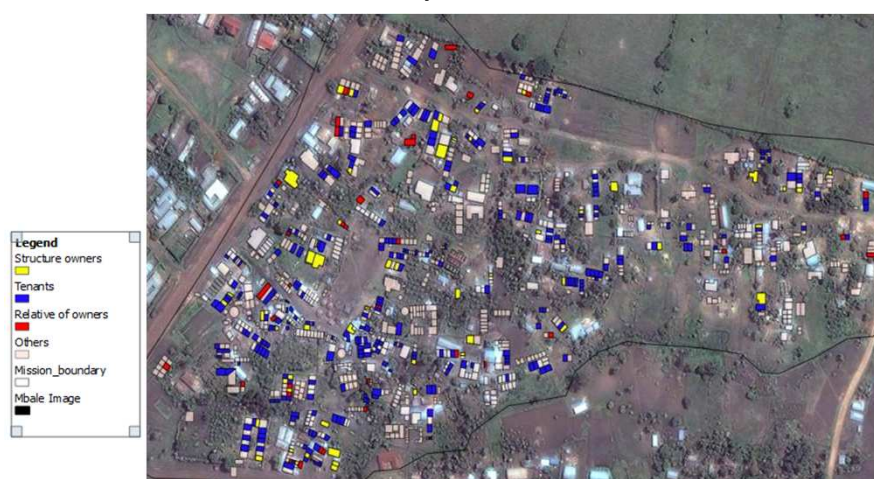
Combined

Project	Numbers
Electricity	256
Water	129
Health Centre	109



Tenure Information

1. How many are structure owners, tenants and people having have other tenure status? And where are they?



More information

Age-disaggregated data: how many are between the age of 7-12 years old?

	Category		Total
	Men	Women	
Gender			
Mission/ Bufumbo	102	104	12%
%	10%	6%	6%

How many are studying?

	Category		Total
	Men	Women	
Gender			
Mission/ Bufumbo	84	80	10%
%	8%	3%	4%



Role of the youth

1. **Planning:** producing community maps, work with local leaders
2. **Sensitization:** Communicate information (Sensitization process at community levels)
3. **Technology users.** Operating equipment (GPS, Camera, Computers)
4. **Leadership:** Part of cluster leadership



Notable achievement

- The youth emerge champions in STDM work
- Local leadership in full support of the community
- Community identified priority project in their locality.
- Higher authority embrace the work and ready to scale up
- STDM learning center established in the national federation office.



Key Lessons

- Project is a good **model for partnerships**
- STDM – from concept to **implementation**; it is **technically sound, has multiple usage and simple to use**
- Combination of pro-poor land tools (STDM, participatory enumeration) is **doable, effective and useful**
- **Ownership** by the community of the process is key
- **Capacity development** is a catalyst for sustainability; experience opens up scaling up **opportunities**
- Pro-poor solutions have **huge potential** to impact on the lives of the poor



Next Steps

Data updating and validation

- **Data Validation** in the community centers
- **Pursue Priority Project activities** to be implemented with relevant authorities
- **Data analysis and reporting**
- **Learning Center** to be used for further STDM work



Thank you

Addressing the Land Information Requirements of the Urban Poor - *Piloting STDM in Uganda*

